

20' x 25' Salon Specifications

SALON BOOTH PACKAGE INCLUDES:

- Showcase Options:
- Two (2) 2M Towers
 - Two (1) 1M Towers
 - Two (2) 2M Low
 - One (1) 2M Tower and One (1) 2M Low
- Four (4) Wastebaskets
 - Twelve (12) Wynn Hotel Ballroom Chairs
 - Four (4) Tables *(please complete the Salon Package Table Order Form by April 29, 2024)*
 - Inline: Two (2) Track Lighting Bars with five (5) 6000K LED 12 watt fixtures each
 - Corner: One (1) Track Lighting Bar with eight (8) 6000K LED 12 watt fixtures
 - Electrical for the showcases and the lights in each booth will be included. Any other items requiring electricity in the Salons will require an electrical order to be placed with Freeman. Please refer to the Freeman Electrical Order Form.
 - Custom sign plaque with company name and booth number in Couture Type font
 - One time vacuuming prior to show opening
 - Daily trash removal *(please leave your wastebasket outside your booth at close of show each day)*

Note: For 2M low showcases only, in addition to track in center, one (1) track with three (3) lights hung behind sign plaque above low showcase will be added.

- Salon Size: Salon measures 20' (6.10M) wide x 25' (7.62M) long x 8' (2.44M) high. Please see internal exhibit dimensions on attached renderings.
- Color: Exterior walls are Morris Oak Wood Laminate. Interior walls are Light Gray Laminate.

Decorating Interior of Salons: All materials or adhesives must be removed from panels, showcase shelves and showcase doors at close of show. Any remaining materials or adhesives will be removed at an additional labor cost to the exhibitor.

- PLEASE NOTE:
- There is a weight limit of 50 lbs. for each 1M wall panel.
 - For stability, no additional lights can be added to the sign light track.

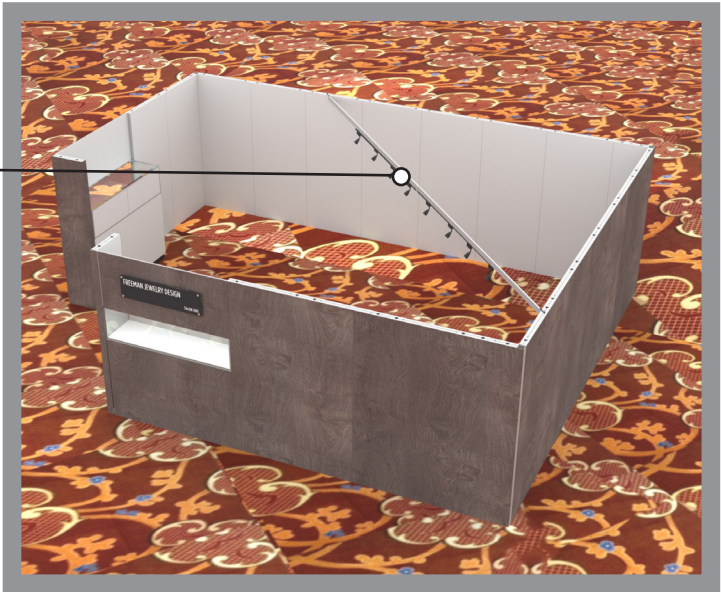
Freeman will provide two (2) design renderings at No Charge for Salon customizations or changes. Additional revisions will be charged at \$250.00 each.

All salon structure changes and/or customizations must be finalized by April 12, 2024 or surcharges will apply. Changes made after May 3, 2024 will incur 30% surcharge. No additional changes allowed May 4, 2024 though show open. On May 4, 2024, your salon will be ordered at the package you purchased through COUTURE management.

Please contact CoutureSales@freeman.com to discuss further customizing your space.

20 X 25 CORNER SALON
2M Tower Showcases Option

8 Track Lights



Morris Oak
Wood Laminate

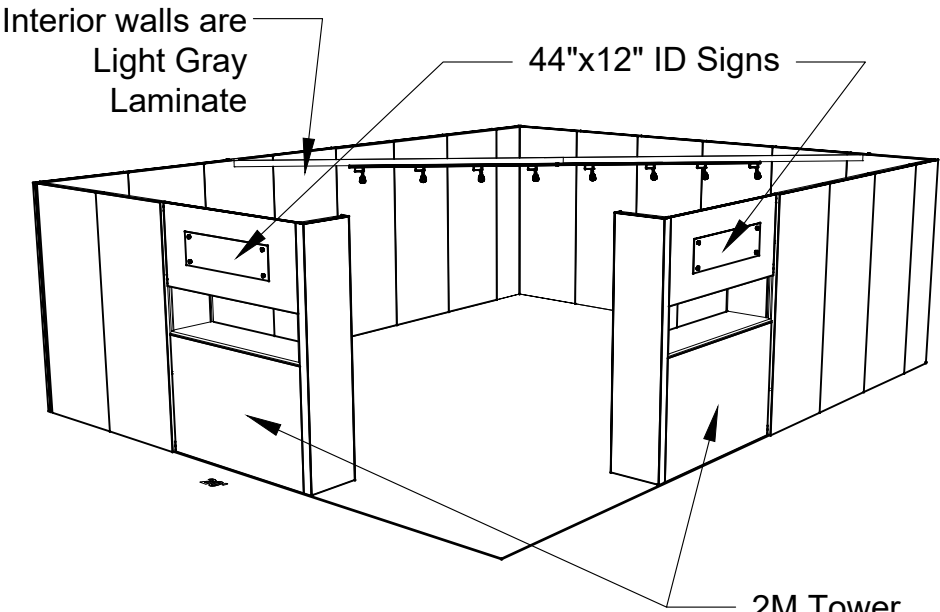
44"x12" ID Sign

Light Gray Laminate



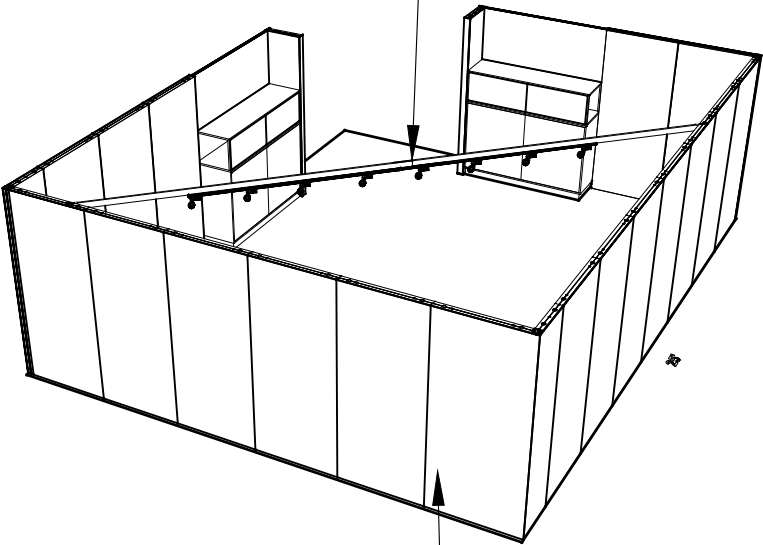
Showcases have
LED lights integrated

20x25 Premium Corner, 2M Tower Showcases



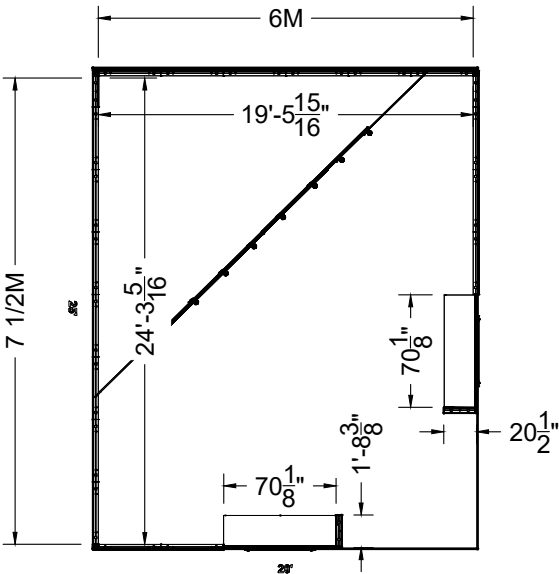
PERSPECTIVE - FRONT

8 Track Lights

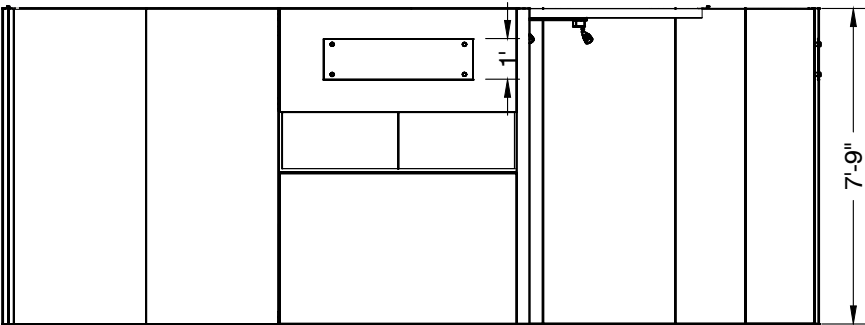


PERSPECTIVE - BACK

Exterior walls are
Light Gray Wood
Laminate




PLAN VIEW




FRONT VIEW

LESS THAN 30 DAYS OUT

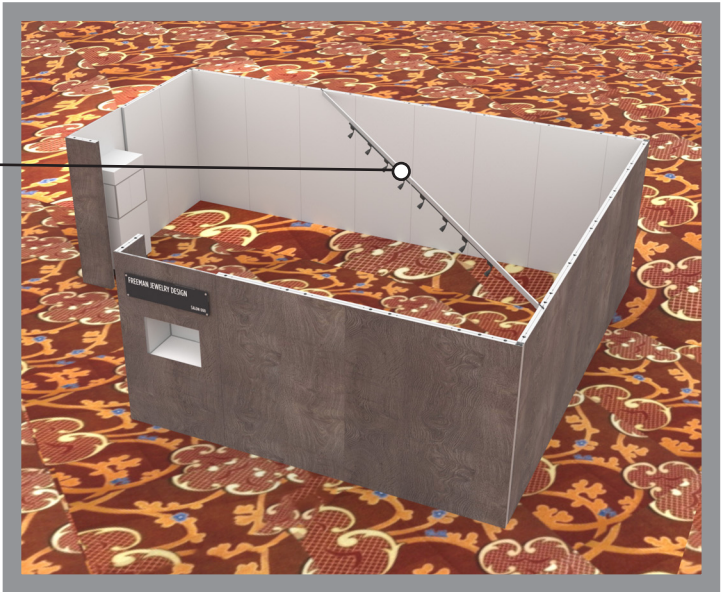

* 0 0 5 0 5 9 0 7 0 1 - 1 0 1 1 - 0 *

MORE THAN 30 DAYS OUT


* 0 0 5 0 5 9 0 7 0 1 - 1 0 1 1 - 1 *

20 X 25 CORNER SALON
1M Tower Showcases Option

8 Track Lights



Morris Oak
Wood Laminate

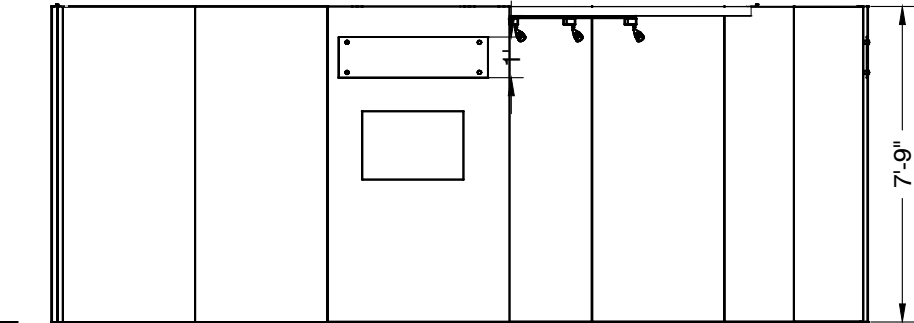
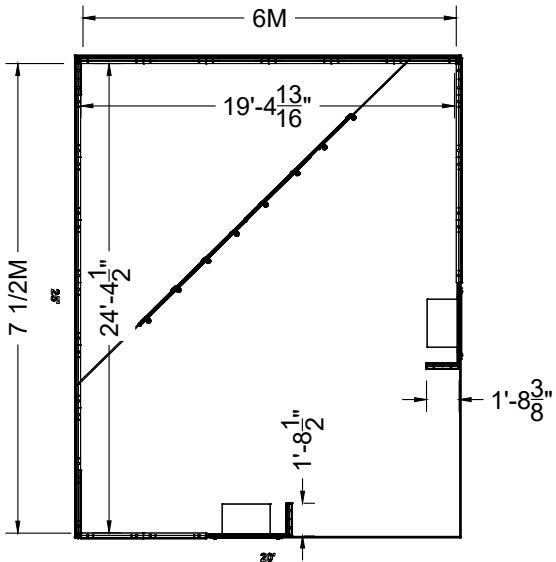
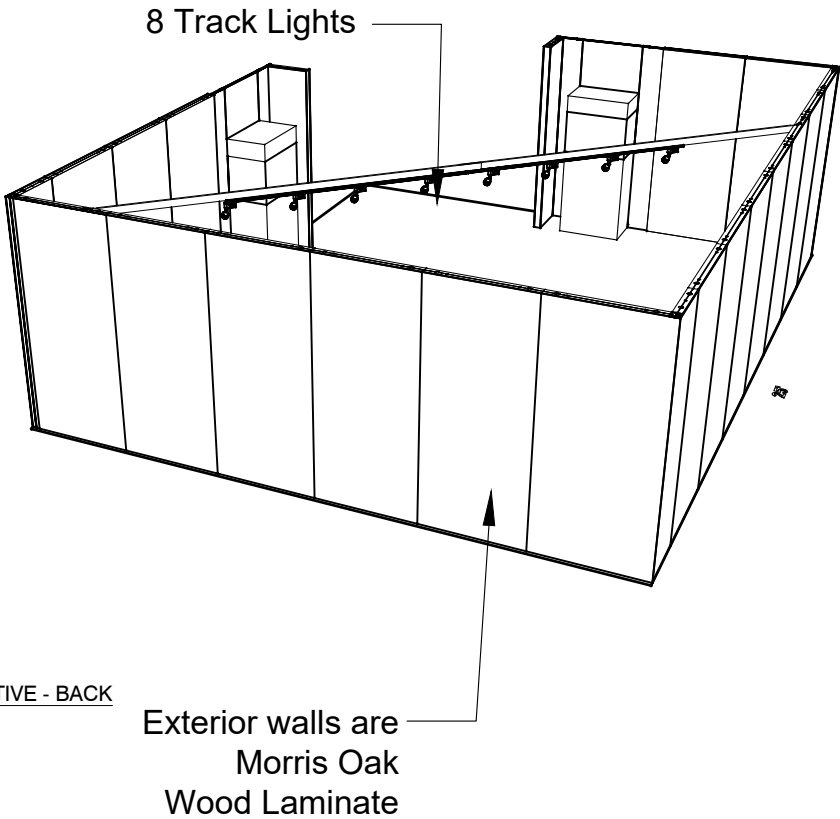
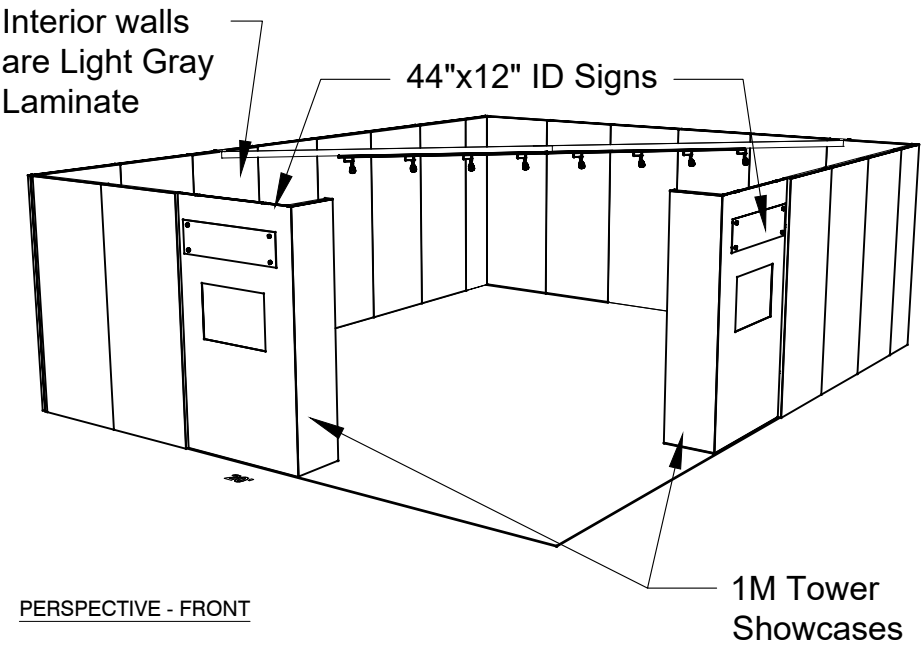
44"x12" ID Sign

Light Gray Laminate



Showcases have
LED lights integrated

20x25 Premium Corner, 1M Tower Showcases



LESS THAN 30 DAYS OUT

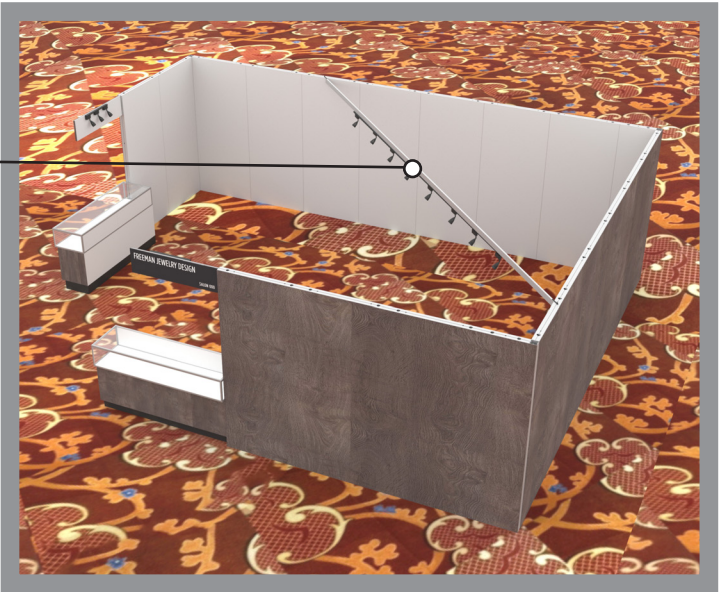
* 0 0 5 0 5 9 0 7 0 1 - 1 0 1 1 - 0 *

MORE THAN 30 DAYS OUT

* 0 0 5 0 5 9 0 7 0 1 - 1 0 1 1 - 1 *

20 X 25 CORNER SALON
2M Low Showcases Option

8 Track Lights



Morris Oak
Wood Laminate

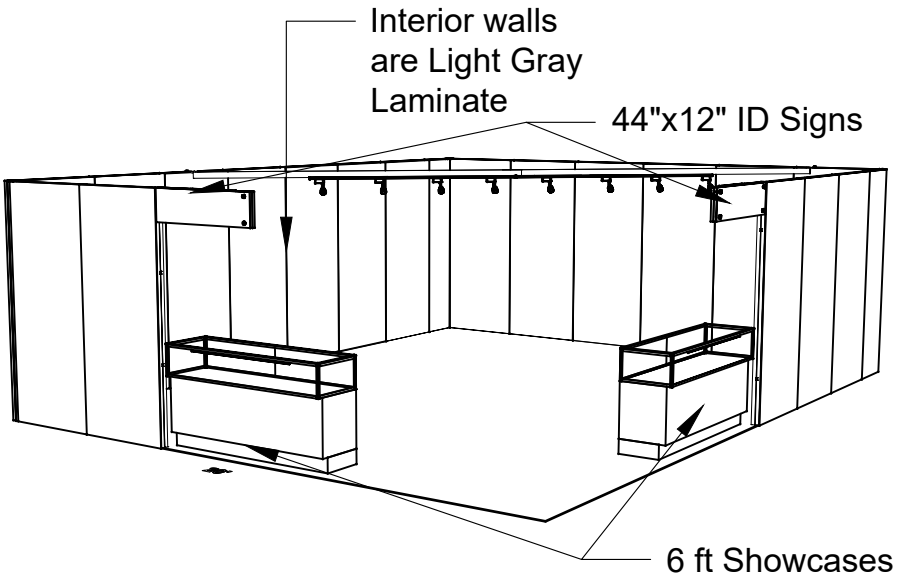
44"x12" ID Sign
(There are 3 track lights behind sign)

Light Gray Laminate

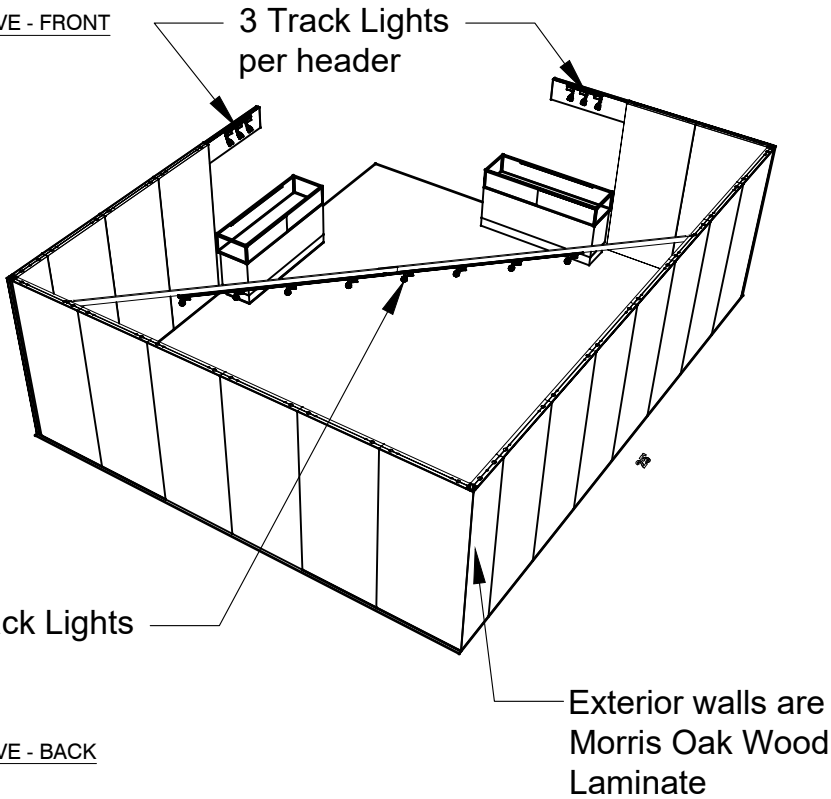
Showcases have
LED lights integrated



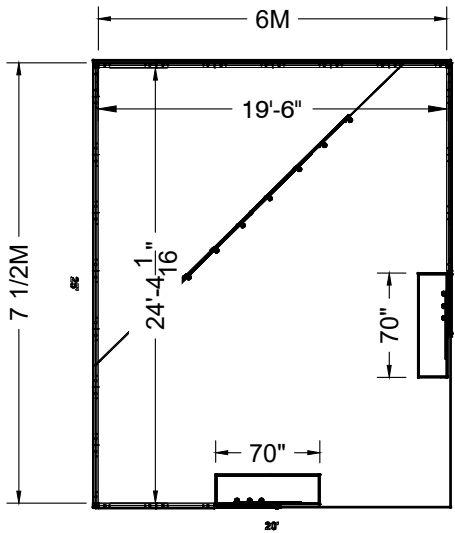
20x25 Premium Corner-2M Low Showcases



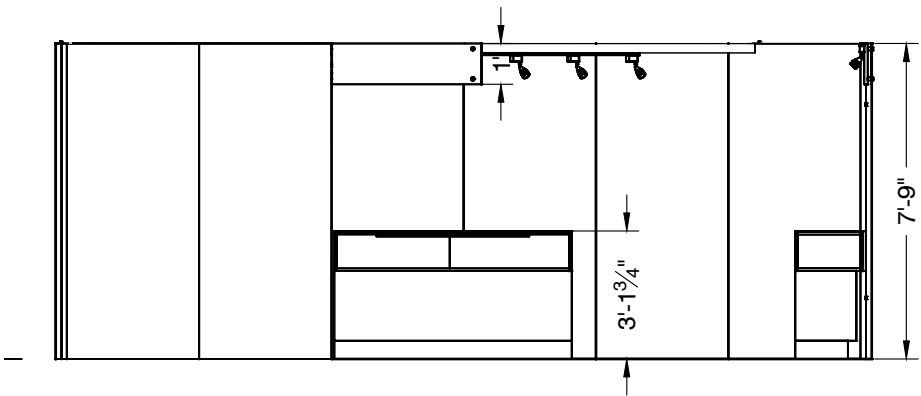
PERSPECTIVE - FRONT



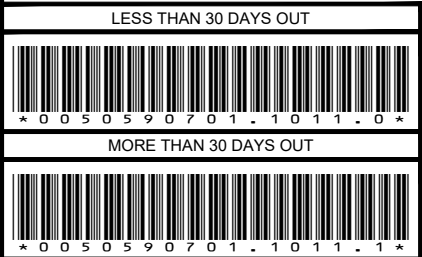
PERSPECTIVE - BACK



PLAN VIEW



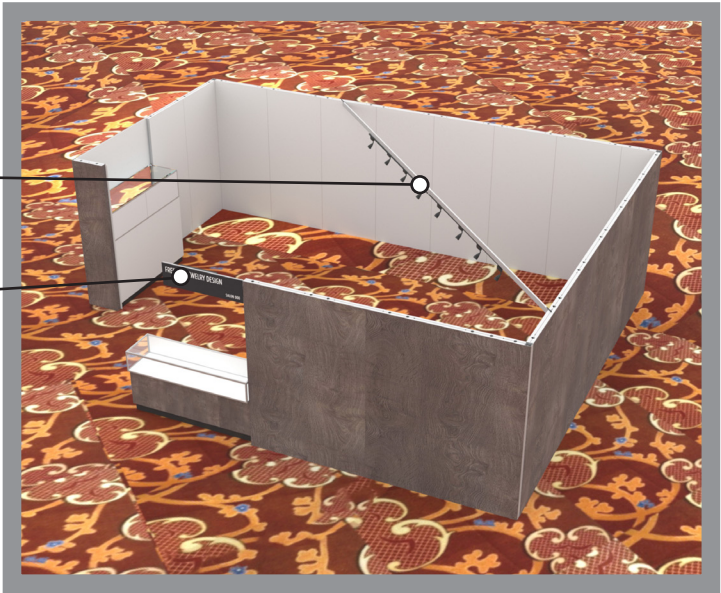
FRONT VIEW



20 X 25 CORNER SALON
2M Tower and 2M Low Showcases Option

8 Track Lights

44"x12" ID Sign
(There are 3 track lights behind sign)



Morris Oak
Wood Laminate

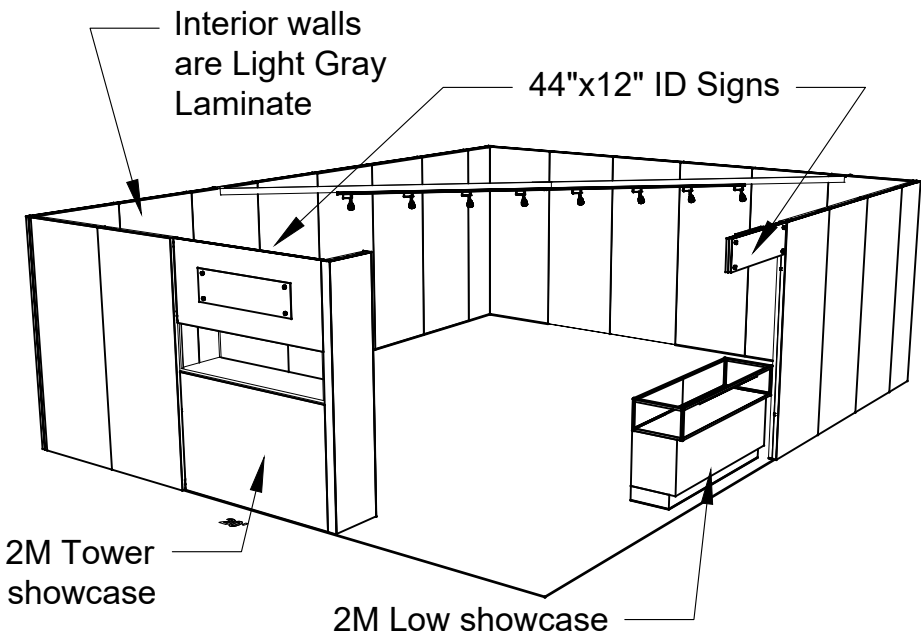
44"x12" ID Sign

Light Gray Laminate

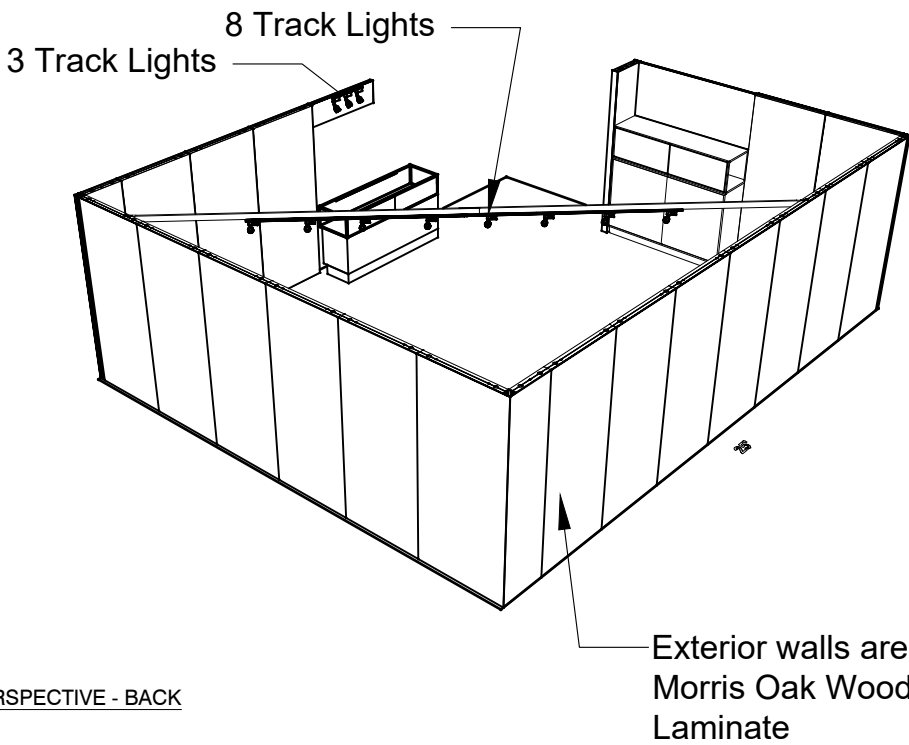


Showcases have
LED lights integrated

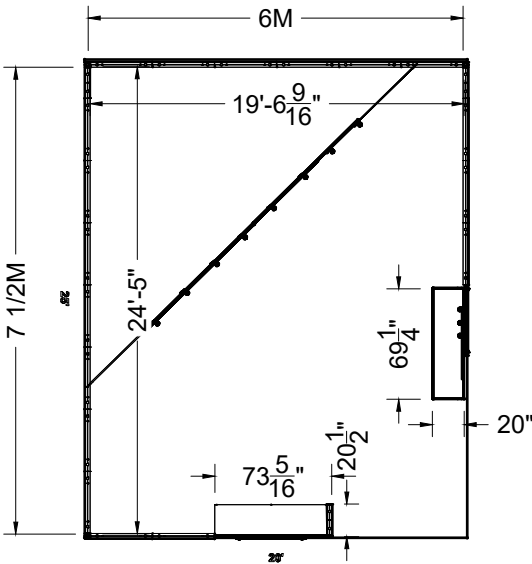
20x25 Premium Corner, 2M Tower & 2M Low
Showcases



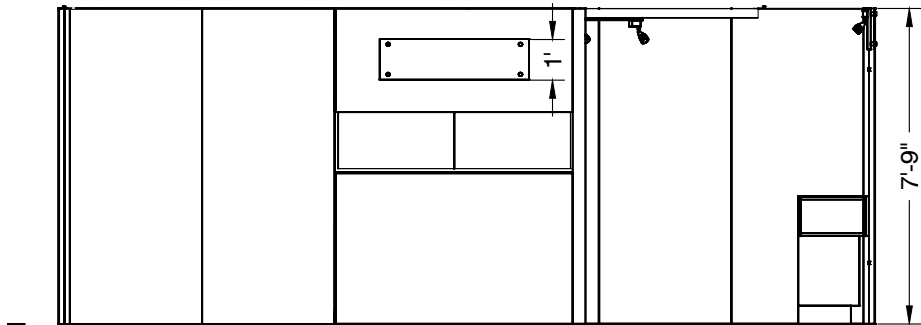
PERSPECTIVE - FRONT



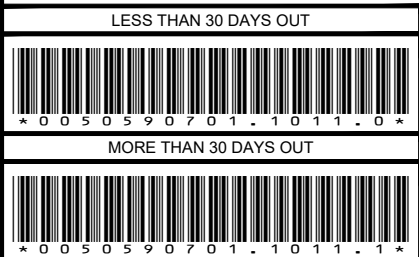
PERSPECTIVE - BACK



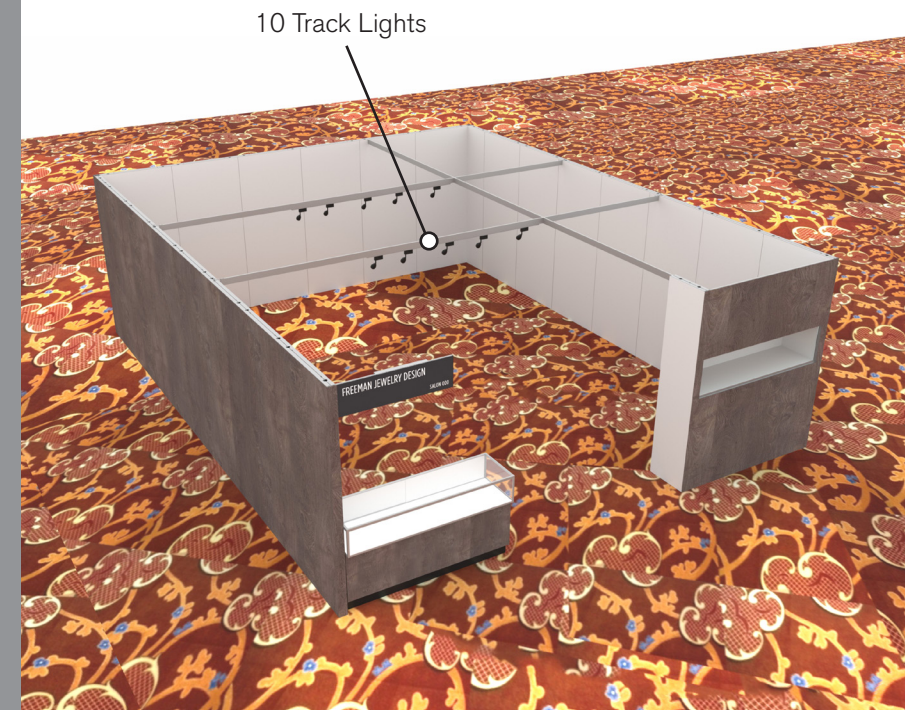
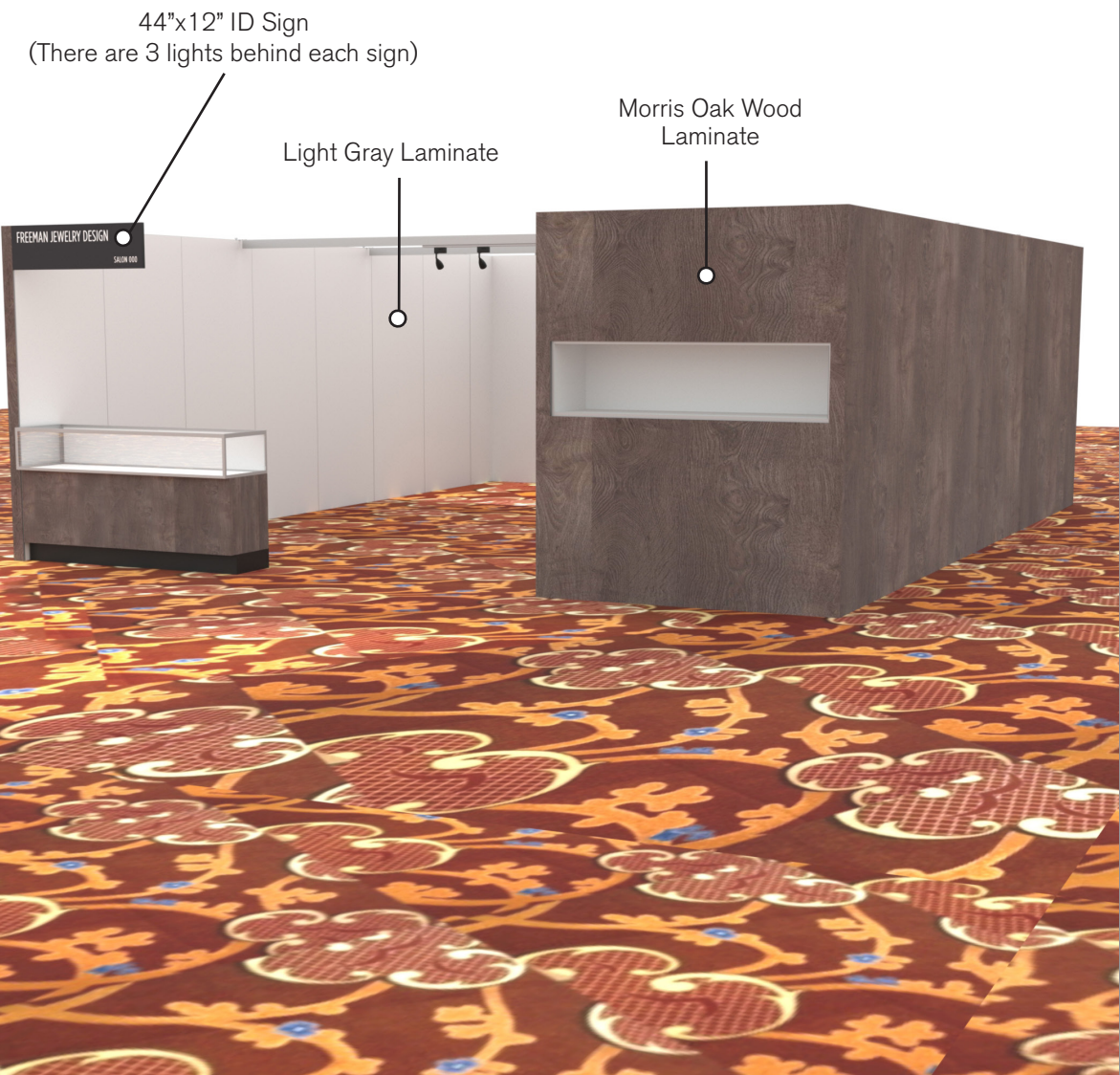
PLAN VIEW



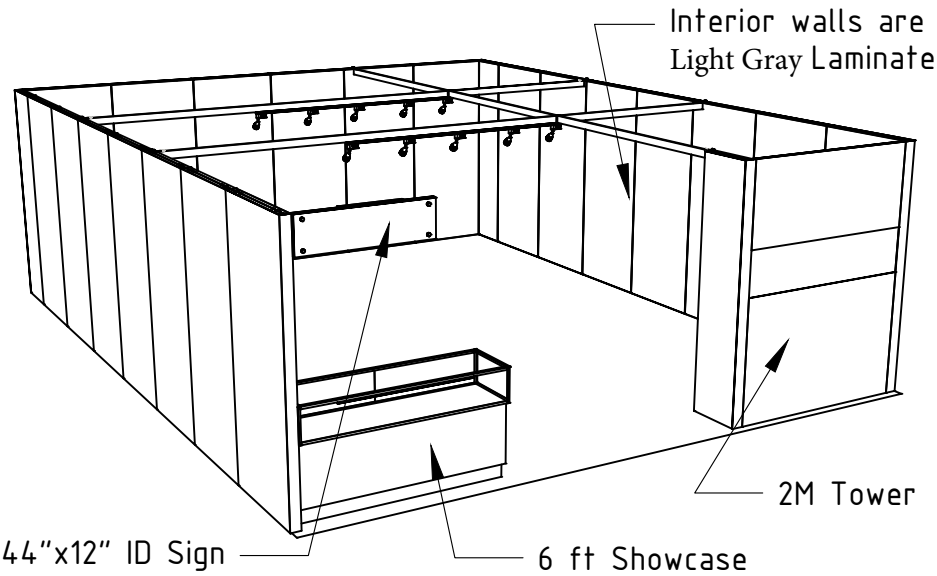
FRONT VIEW



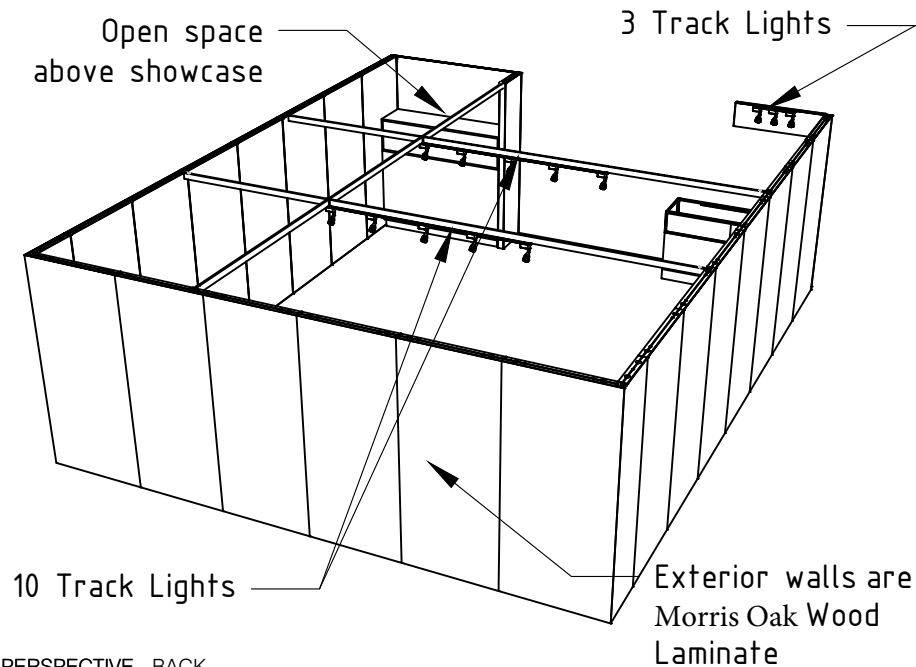
20 x 25 INLINE SALON
2M Tower and Low Showcase Option



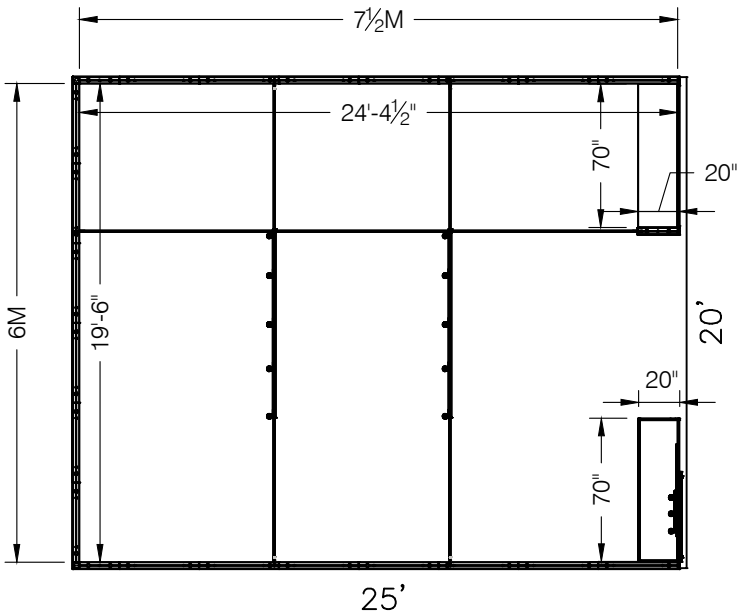
20x25 - 2M Tower and 2M Low Showcase Option



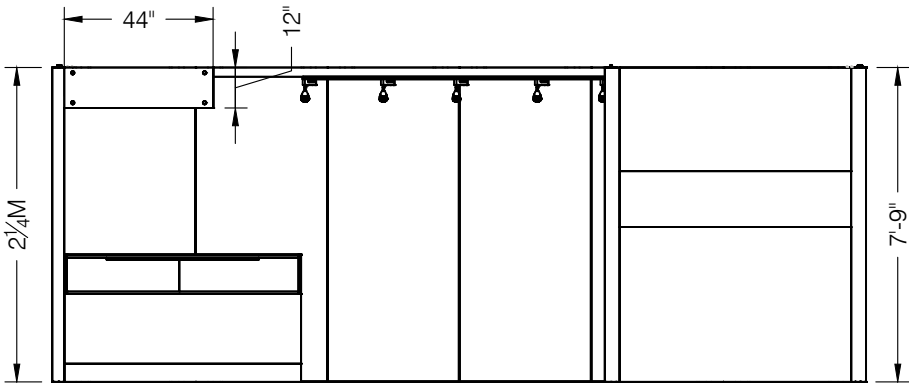
PERSPECTIVE - FRONT



PERSPECTIVE - BACK



PLAN VIEW



FRONT VIEW