

15' x 10' Inline Salon Specifications

SALON BOOTH PACKAGE INCLUDES:

Showcase Options: One 2M Tower (6')
One 1M Tower (3')
One 2M Low (6')

- One (1) Wastebasket
- Six (6) Wynn Hotel Ballroom Chairs
- Two (2) Tables (*please complete the Salon Package Table Order Form by May 5, 2025*)
- One (1) Track Lighting Bar with six (6) 6000K LED 12 watt fixtures
- Electrical for the showcases and the lights in each booth will be included. Any other items requiring electricity in the Salons will require an electrical order to be placed with Freeman. Please refer to the Freeman Electrical Order Form.
- Custom sign plaque with company name and booth number in Couture Type font
- One time vacuuming prior to show opening
- Daily trash removal (*please leave your wastebasket outside your booth at close of show each day*)

Note: For 2M low showcases only, in addition to track in center, one (1) track with three (3) lights hung behind sign plaque above low showcase will be added.

Salon Size: Salon measures 15' (4.57M) wide x 10' (3.05M) long x 8' (2.44M) high.
Please see internal exhibit dimensions on attached renderings.

Color: Exterior walls are Morris Oak Wood Laminate. Interior walls are Light Gray Laminate.

Decorating Interior of Salons: All materials or adhesives must be removed from panels, showcase shelves and showcase doors at close of show. Any remaining materials or adhesives will be removed at an additional labor cost to the exhibitor.

PLEASE NOTE:

- **There is a weight limit of 50 lbs. for each 1M wall panel.**
- **For stability, no additional lights can be added to the sign light track.**

Freeman will provide two (2) design renderings at No Charge for Salon customizations or changes. Additional revisions will be charged at \$250.00 each.

All salon structure changes and/or customizations must be finalized by April 18, 2025 or surcharges will apply. Changes made after May 9, 2025 will incur 30% surcharge. No additional changes allowed May 10, 2025 though show open. On May 10, 2025, your salon will be ordered at the package you purchased through COUTURE management.

Please contact CoutureSales@freeman.com to discuss further customizing your space.

15 x 10 INLINE SALON

2M Tower Option

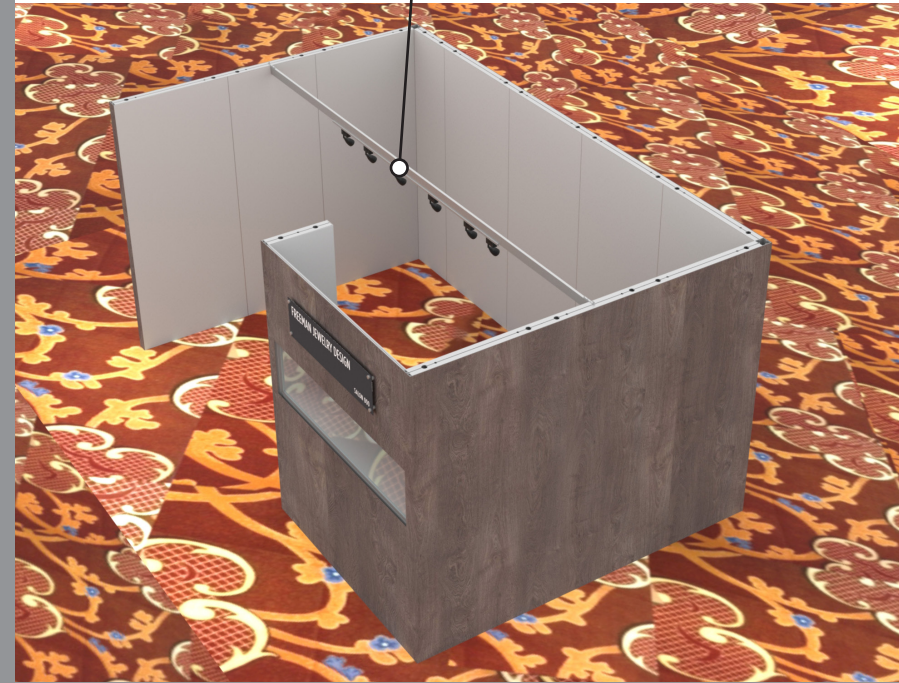
Morris Oak Wood Laminate

Light Gray Laminate

44"x12" ID Sign



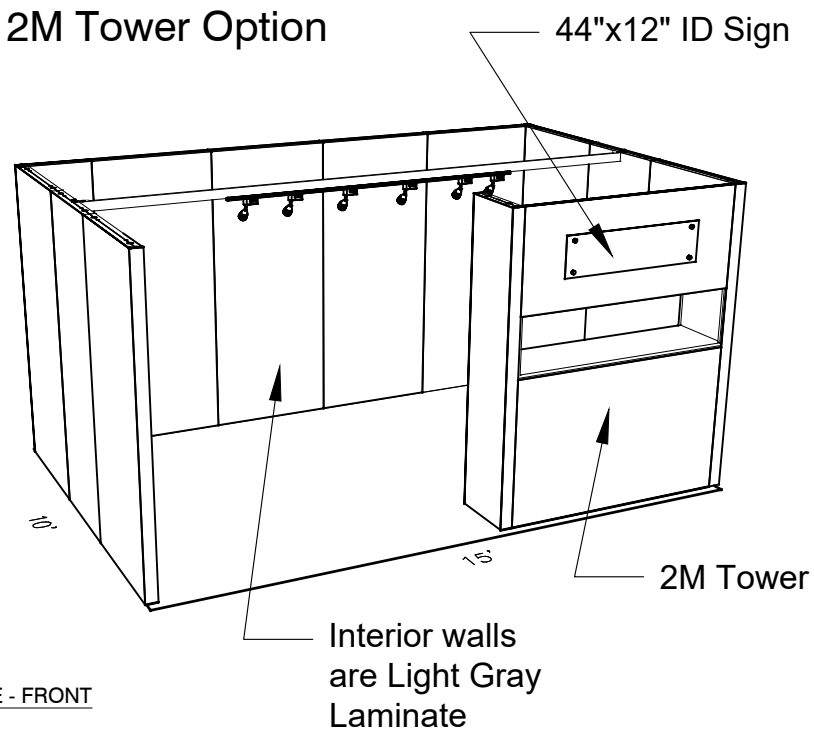
6 Track Lights



Tower showcase has LED lights integrated

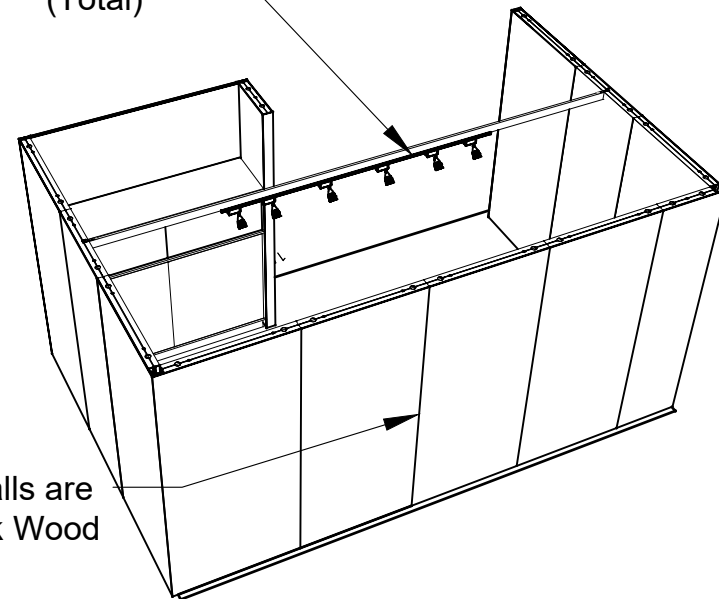


15x10 - 2M Tower Option

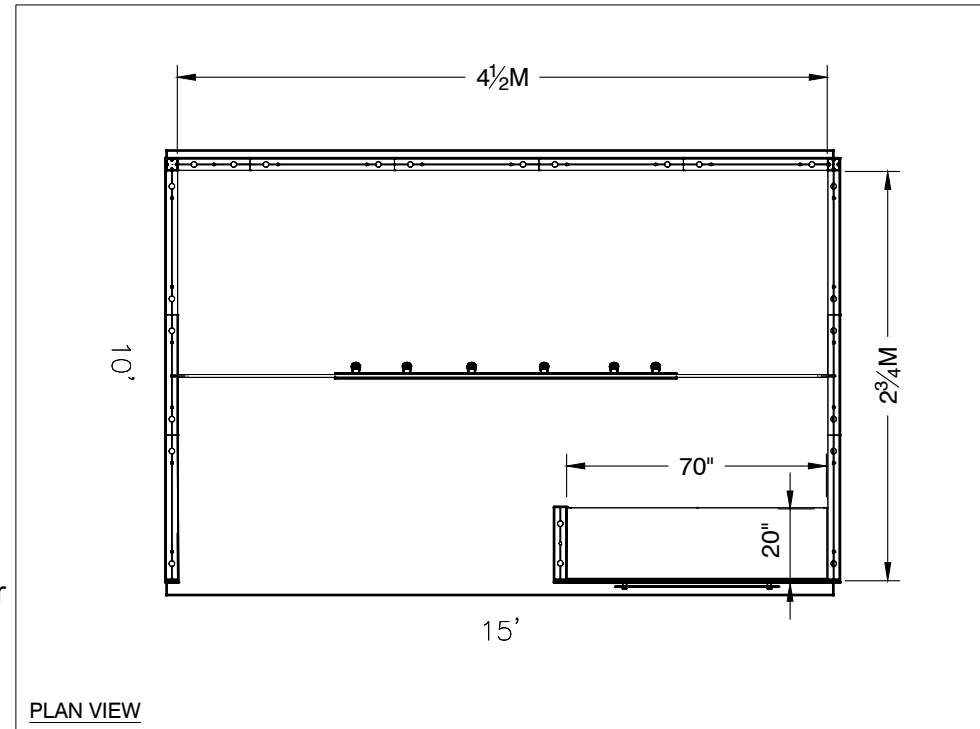


PERSPECTIVE - FRONT

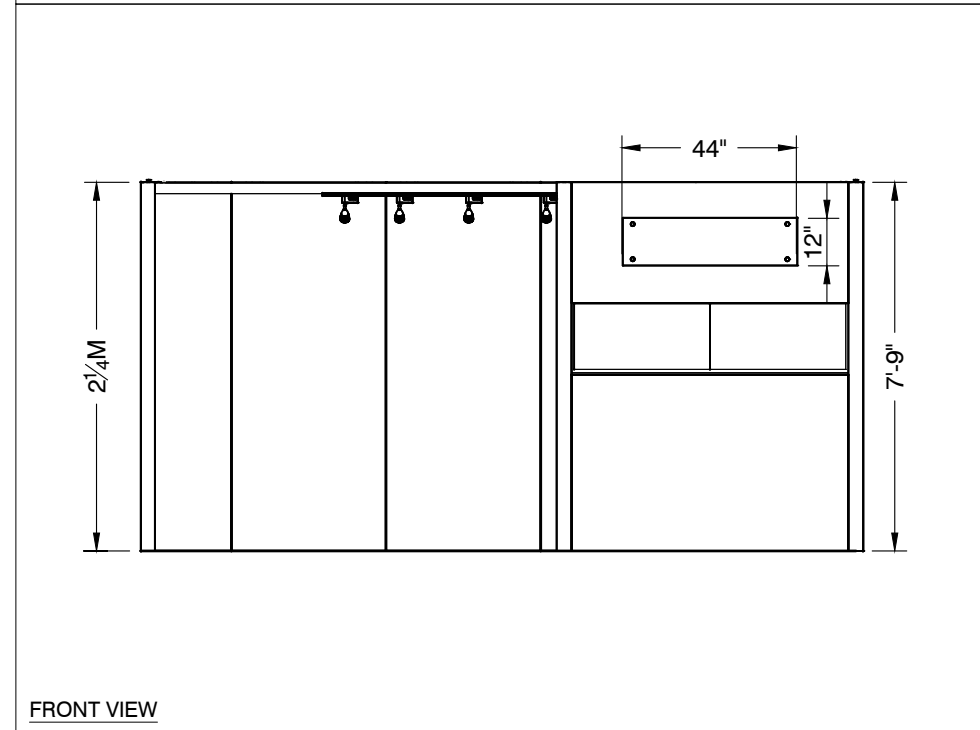
6 Track Lights (Total)



PERSPECTIVE - BACK



PLAN VIEW



FRONT VIEW

LESS THAN 30 DAYS OUT

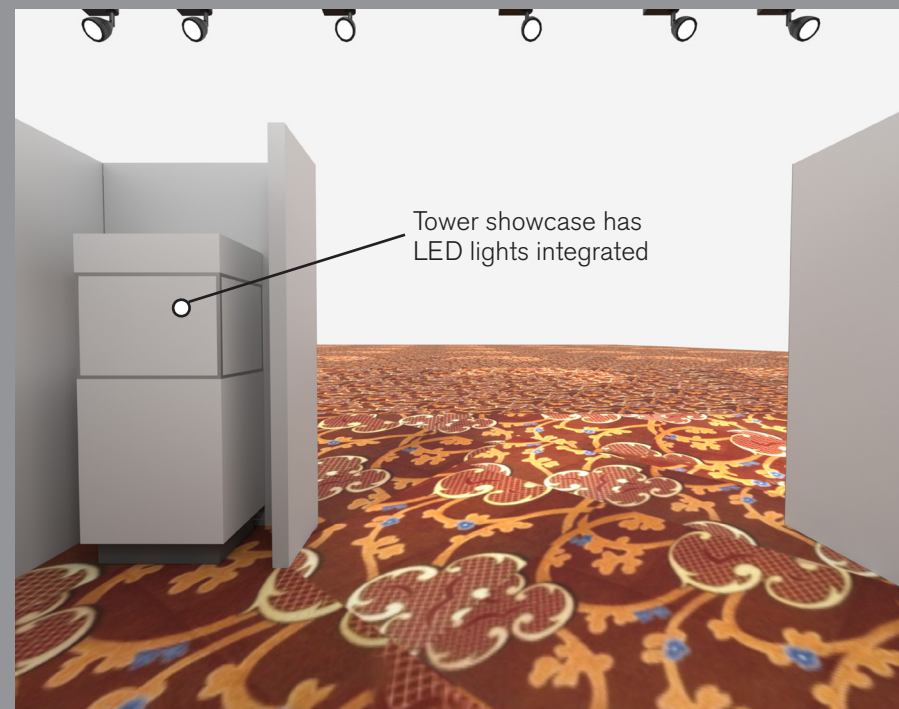
* 0 0 5 0 5 9 0 7 0 1 . 1 0 1 1 . 0 *

MORE THAN 30 DAYS OUT

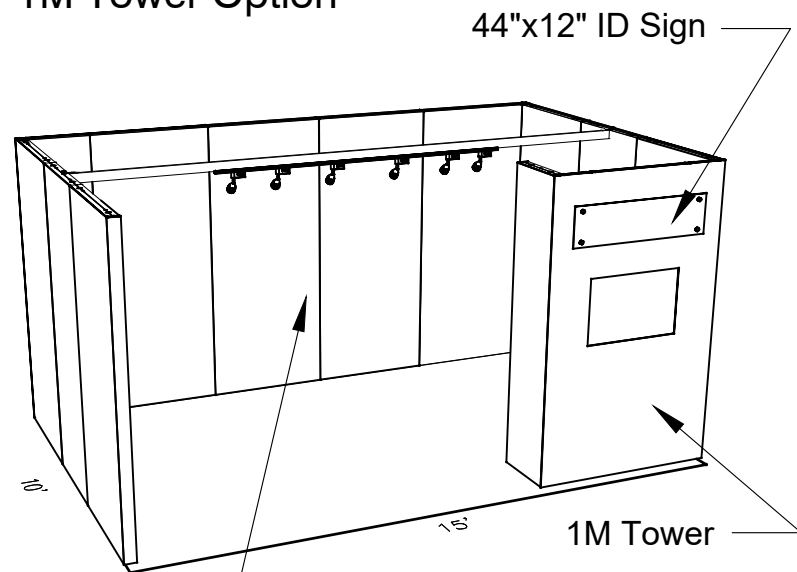
* 0 0 5 0 5 9 0 7 0 1 . 1 0 1 1 . 1 *

15 X 10 INLINE SALON

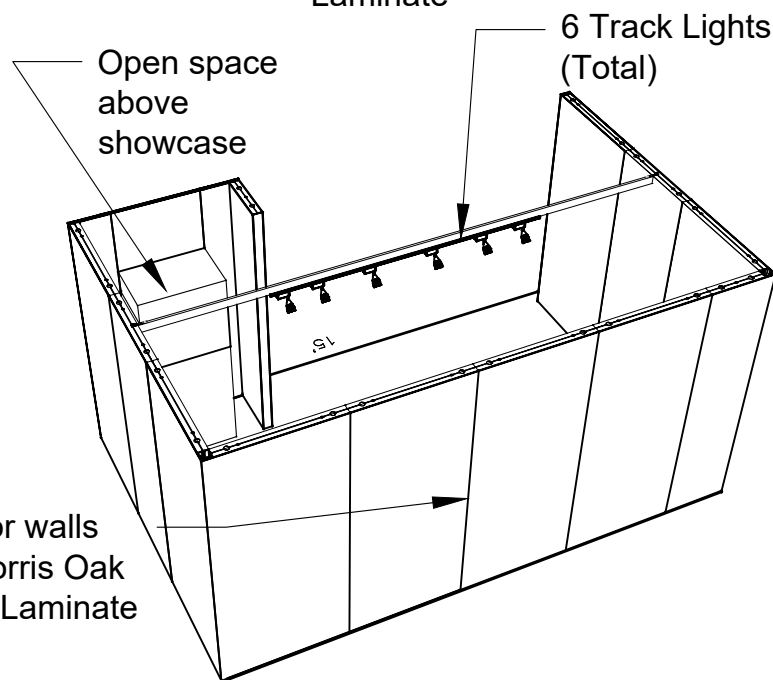
1M Tower Option



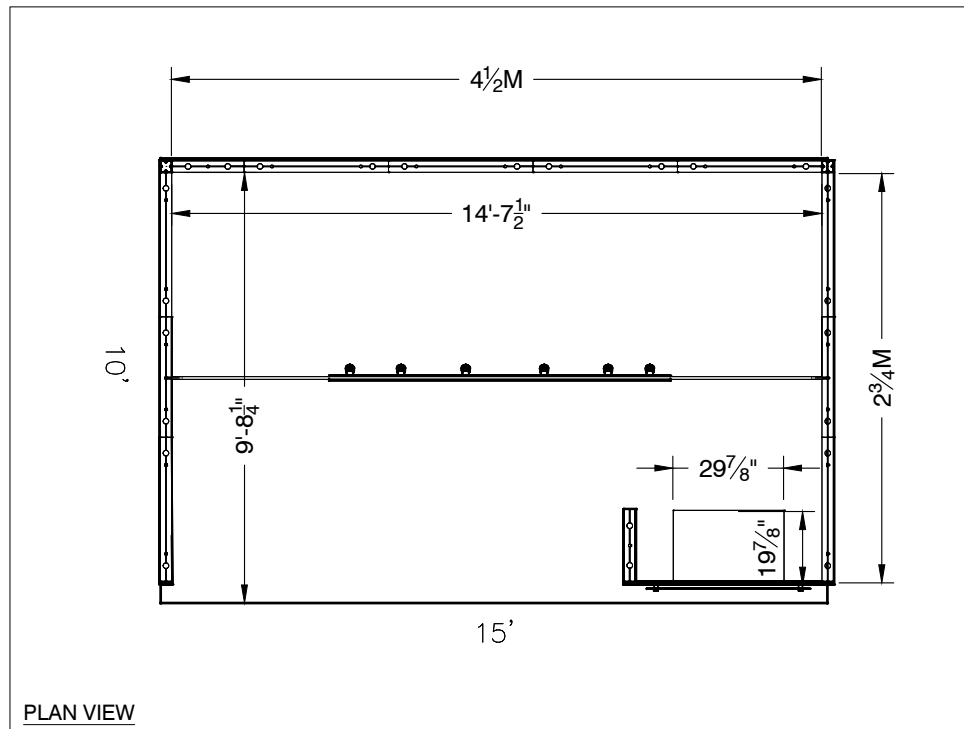
15x10 - 1M Tower Option



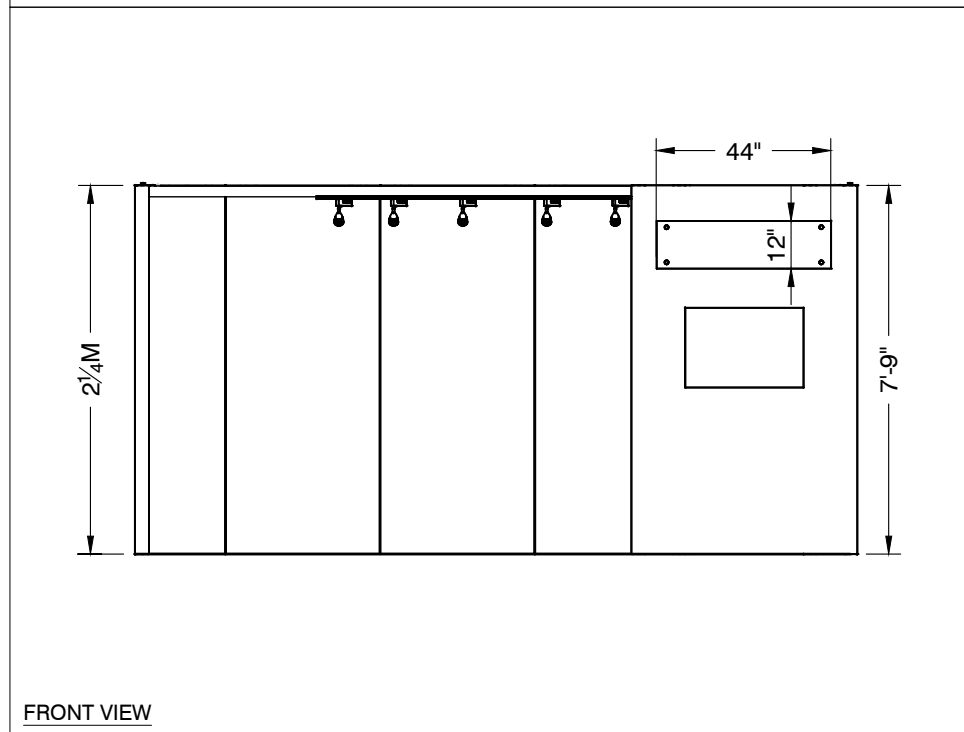
PERSPECTIVE - FRONT



PERSPECTIVE - BACK



PLAN VIEW



FRONT VIEW

LESS THAN 30 DAYS OUT

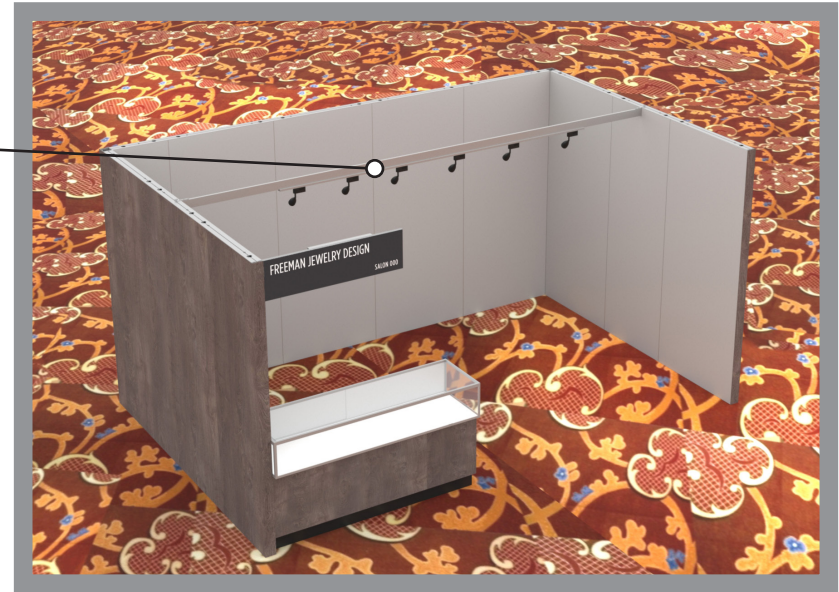
* 0 0 5 0 5 9 0 7 0 1 - 1 0 1 1 - 0 *

MORE THAN 30 DAYS OUT

* 0 0 5 0 5 9 0 7 0 1 - 1 0 1 1 - 1 *

15 x 10 INLINE SALON 2M Low Showcase Option

6 Track Lights



44"x12" ID Sign
(There are 3 lights behind each sign)

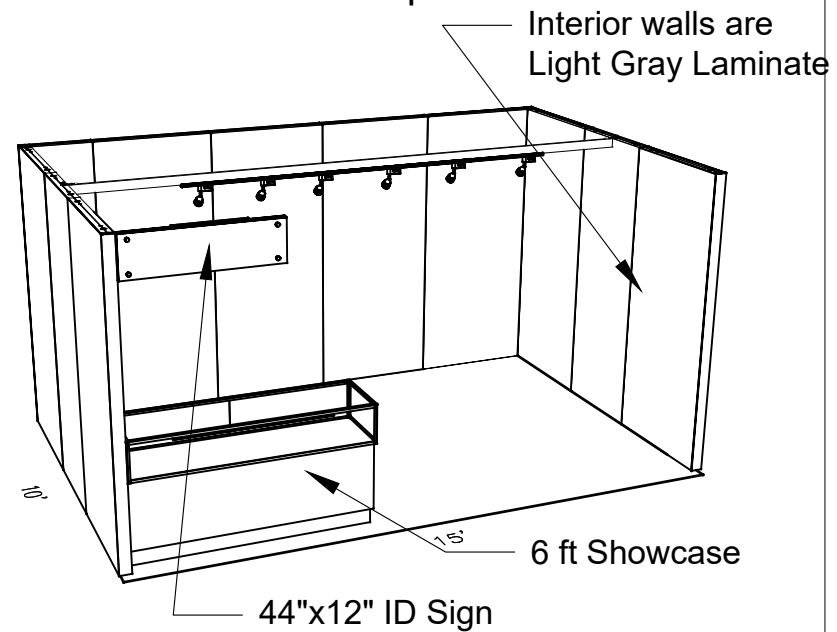
Light Gray Laminate

Morris Oak
Wood Laminate

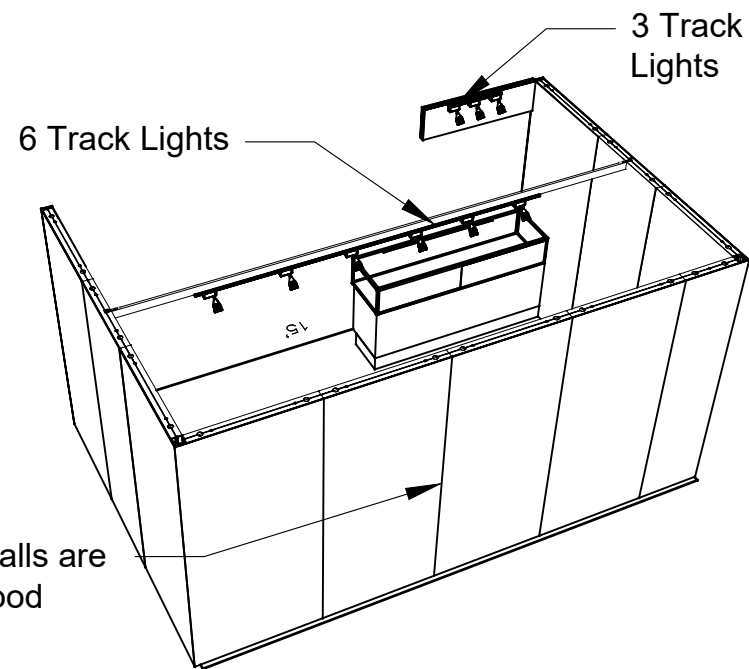
Showcases have
LED lights integrated

FREEMAN JEWELRY DESIGN
SALON 000

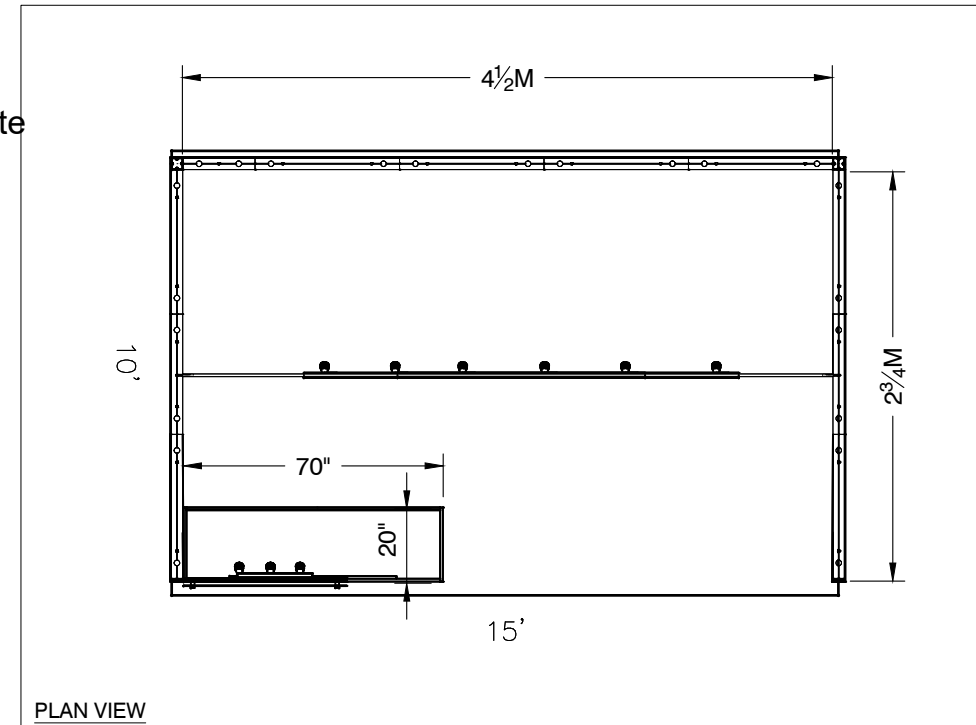
15x10 - 2M Low Showcase Option



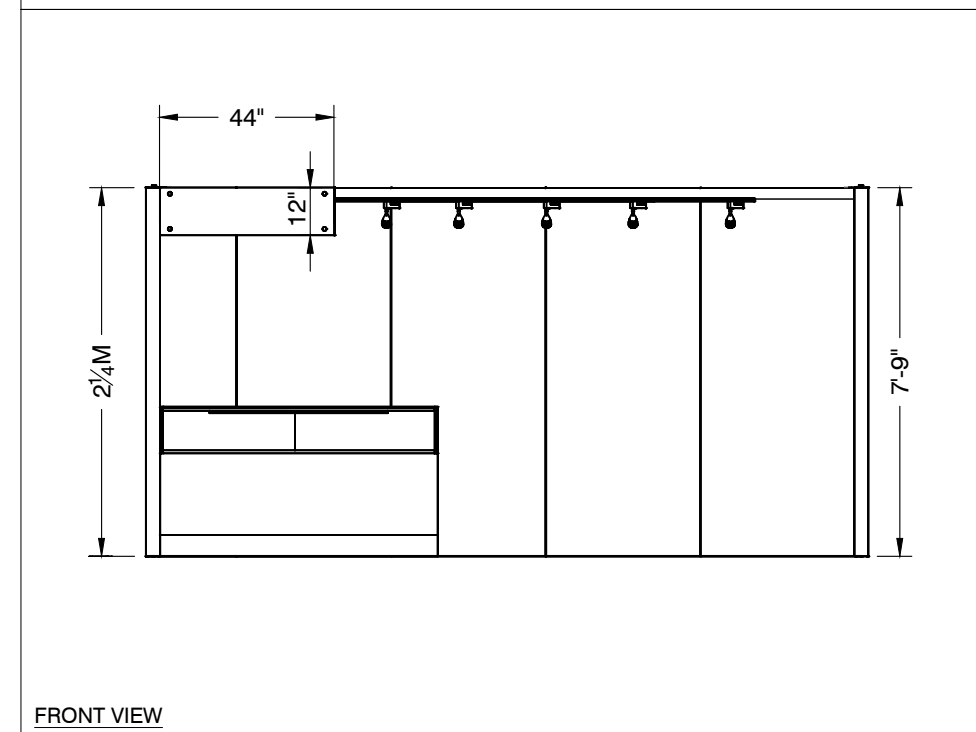
PERSPECTIVE - FRONT



PERSPECTIVE - BACK



PLAN VIEW



FRONT VIEW

LESS THAN 30 DAYS OUT

* 0 0 5 0 5 9 0 7 0 1 - 1 0 1 1 - 0 *

MORE THAN 30 DAYS OUT

* 0 0 5 0 5 9 0 7 0 1 - 1 0 1 1 - 1 *