

## 15' x 15' Inline Salon Specifications

### SALON BOOTH PACKAGE INCLUDES:

**Showcase Options:**    One 2M Tower (6')  
                                     One 1M Tower (3')  
                                     One 2M Low (6')

- Two (2) Wastebaskets
- Nine (9) Wynn Hotel Ballroom Chairs
- Three (3) Tables (*please complete the Salon Package Table Order Form by April 24, 2026*)
- One (1) Track Lighting Bar with six (6) 6000K LED 12 watt fixtures in center
- Electrical for the showcases and the lights in each booth will be included. Any other items requiring electricity in the Salons will require an electrical order to be placed with Freeman. Please refer to the Freeman Electrical Order Form.
- Custom sign plaque with company name and booth number in Couture Type font
- One time vacuuming prior to show opening
- Daily trash removal (*please leave your wastebasket outside your booth at close of show each day*)

Note: For 2M low showcases only, in addition to track in center, one (1) track with three (3) lights hung behind sign plaque above low showcase will be added.

**Salon Size:**                Salon measures 15' (4.57M) wide x 15' (4.57M) long x 8' (2.44M) high.  
Please see internal exhibit dimensions on attached renderings.

**Color:**                     Exterior walls are Morris Oak Wood Laminate. Interior walls are Light Gray Laminate.

**Decorating Interior of Salons:** All materials or adhesives must be removed from panels, showcase shelves and showcase doors at close of show. Any remaining materials or adhesives will be removed at an additional labor cost to the exhibitor.

### PLEASE NOTE:

- There is a weight limit of 50 lbs. for each 1M wall panel.
- For stability, no additional lights can be added to the sign light track.

**Freeman will provide two (2) design renderings at No Charge for Salon customizations or changes. Additional revisions will be charged at \$250.00 each.**

**All salon structure changes and/or customizations must be finalized by April 24, 2026. Changes made after April 24, 2026 will incur 30% surcharge. On April 25, 2026, your salon will be ordered at the package you purchased through COUTURE management.**

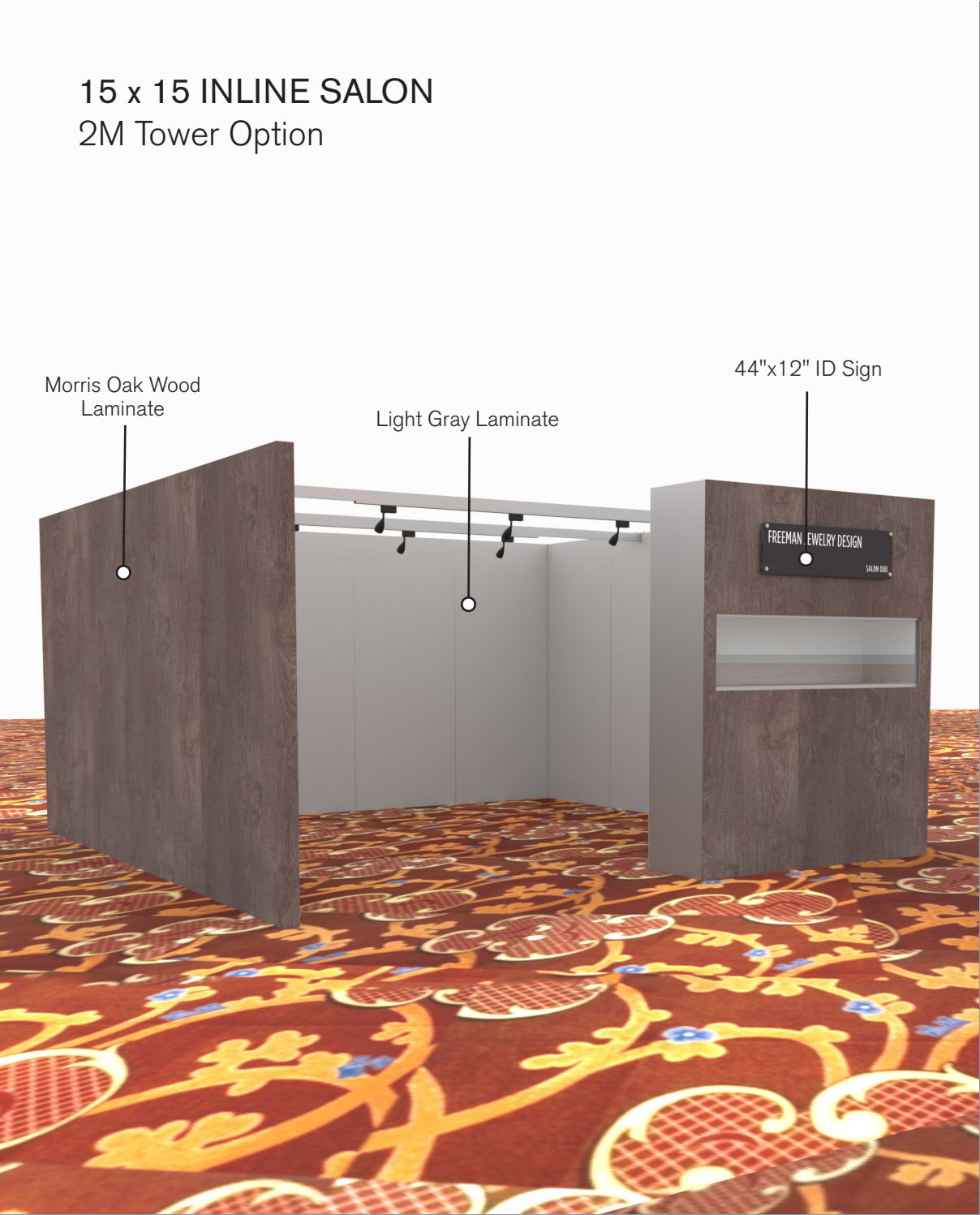
Please contact [CoutureSales@freeman.com](mailto:CoutureSales@freeman.com) to discuss further customizing your space.

15 x 15 INLINE SALON  
2M Tower Option

Morris Oak Wood  
Laminate

Light Gray Laminate

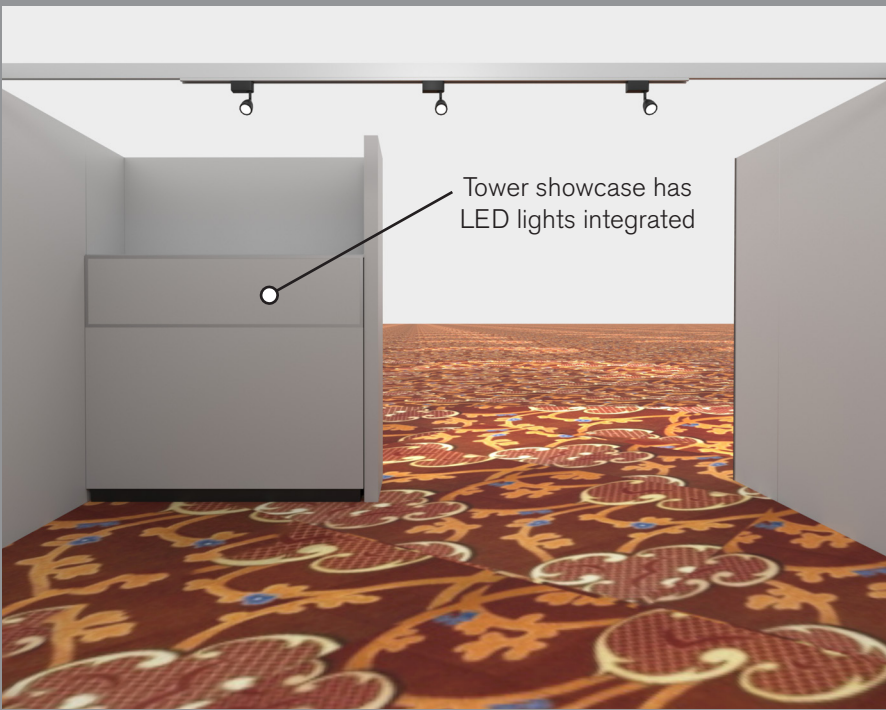
44"x12" ID Sign



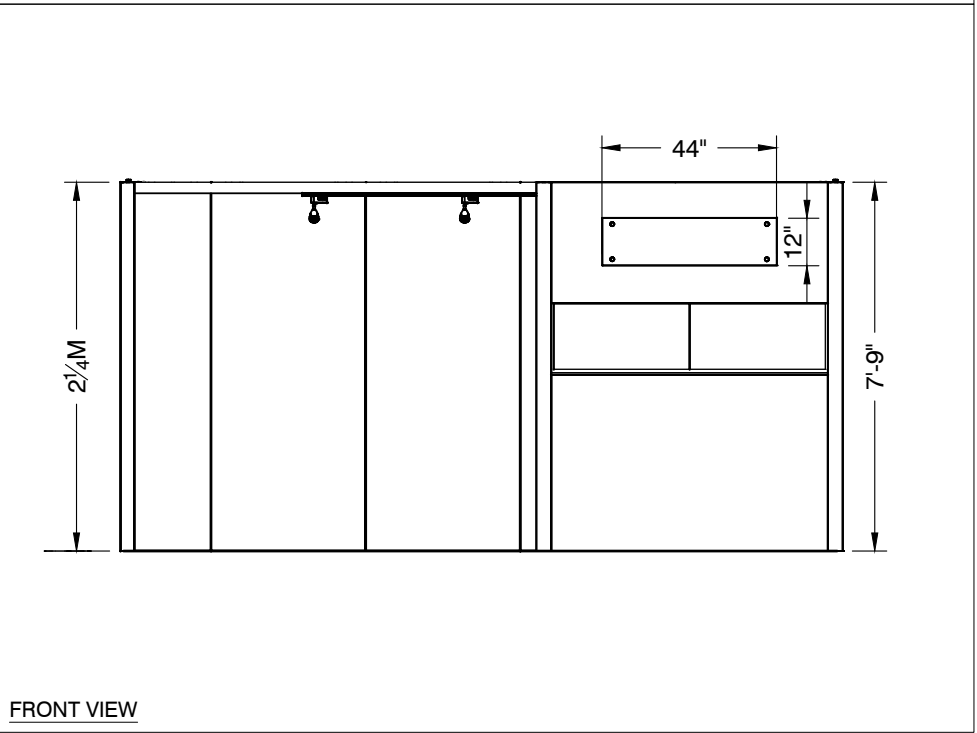
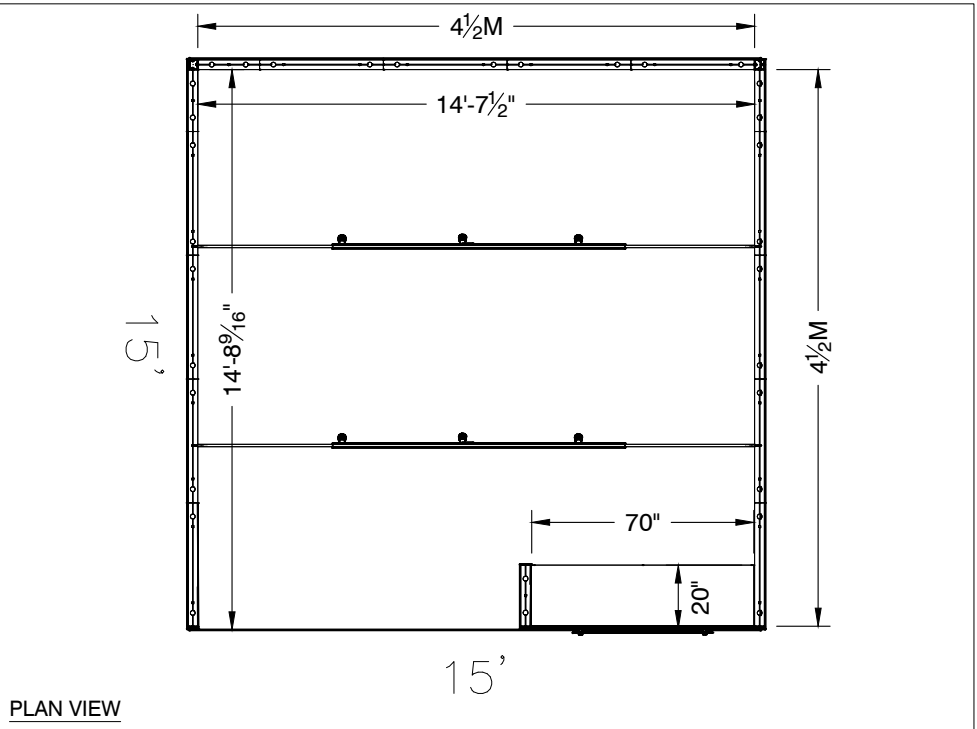
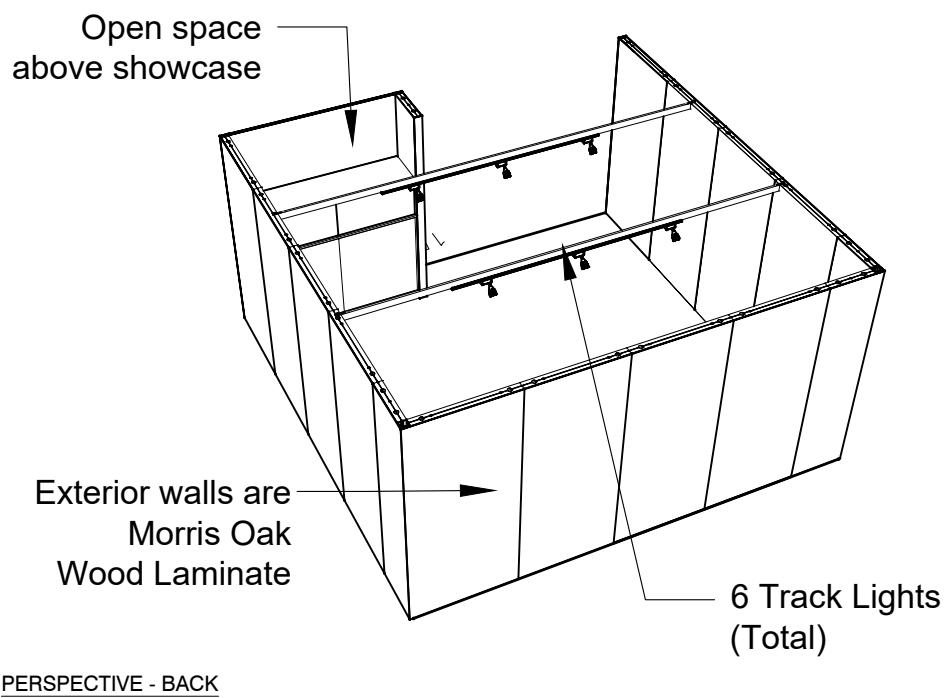
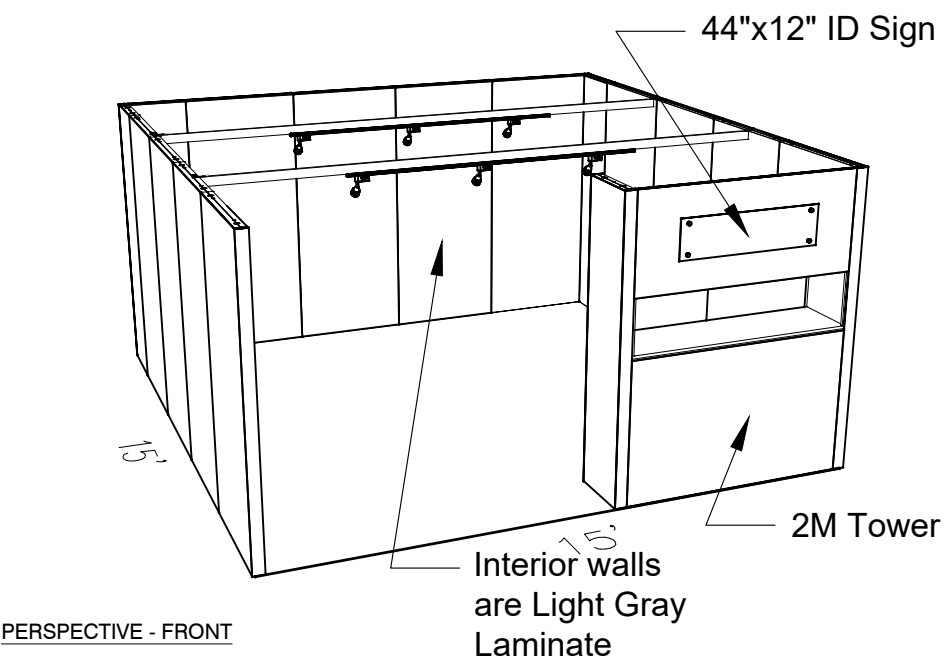
6 Track Lights



Tower showcase has  
LED lights integrated



15x15 - 2M Tower Option



LESS THAN 30 DAYS OUT

\* 0 0 5 0 5 9 0 7 0 1 - 1 0 1 1 - 0 \*

MORE THAN 30 DAYS OUT

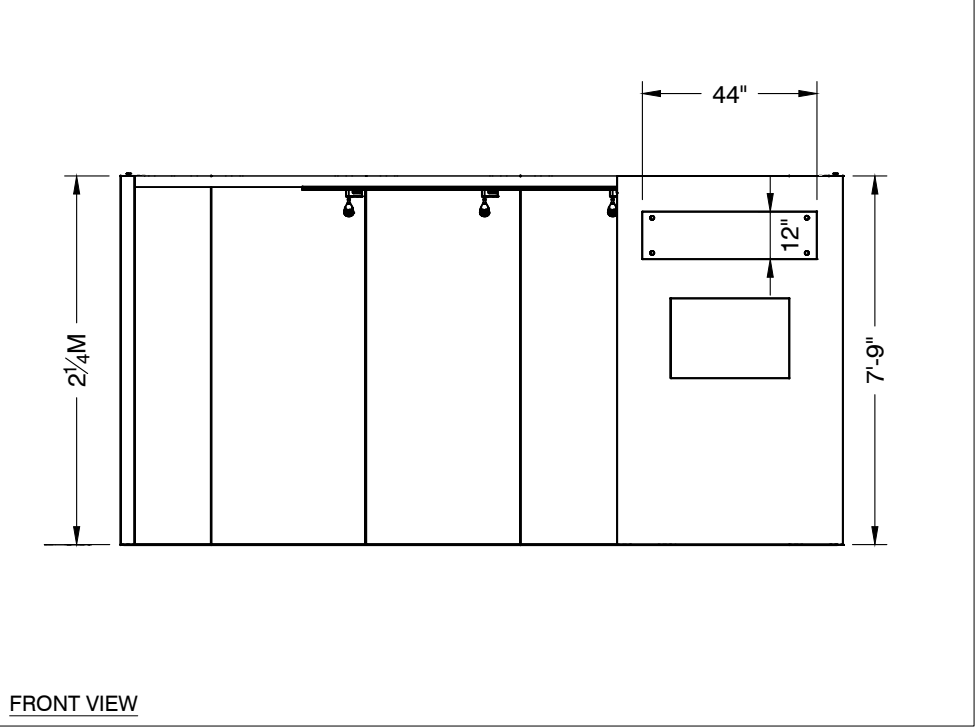
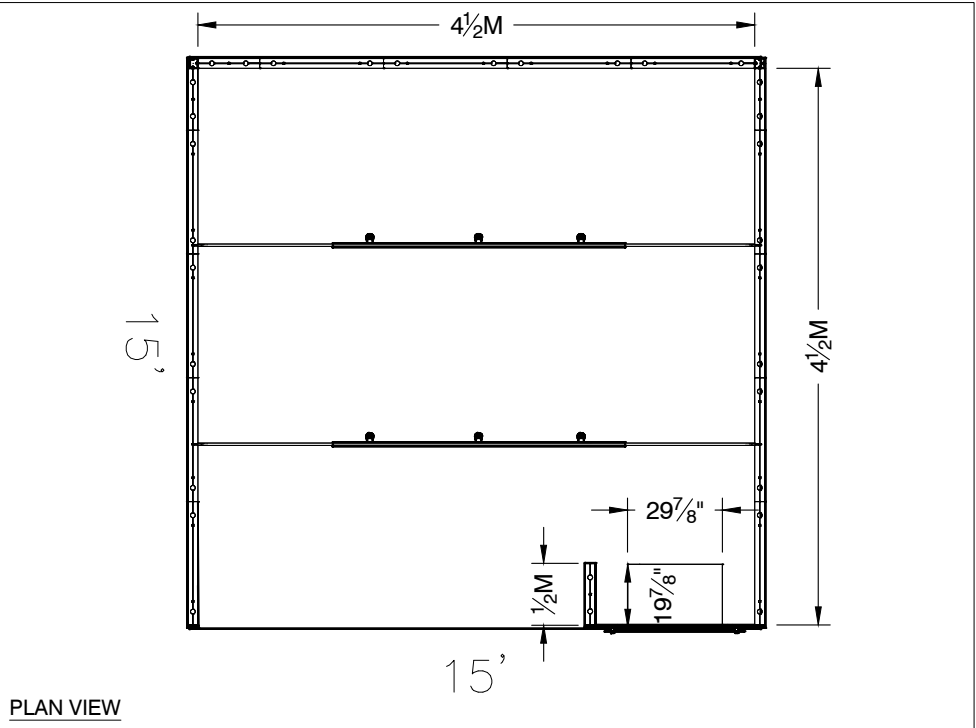
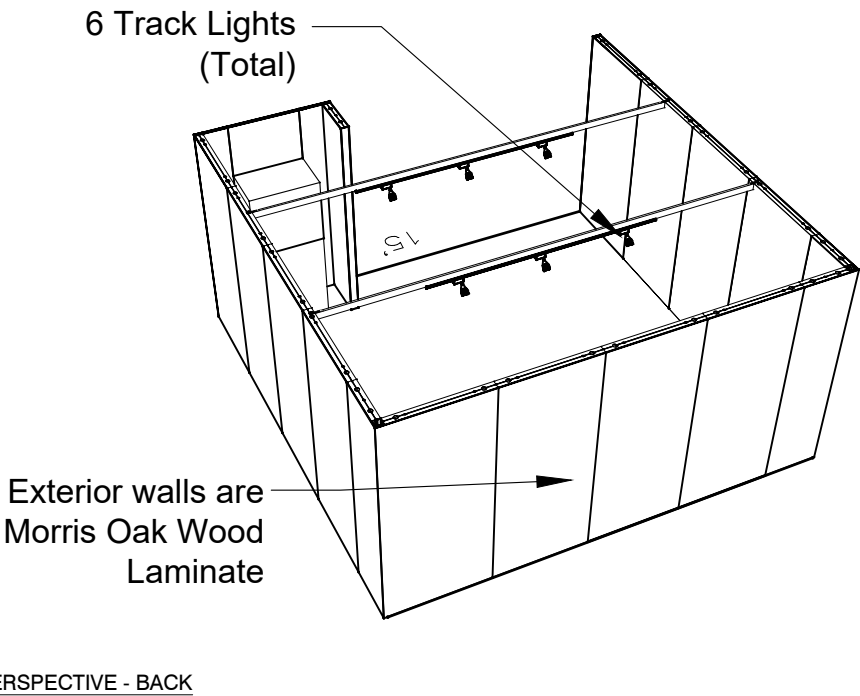
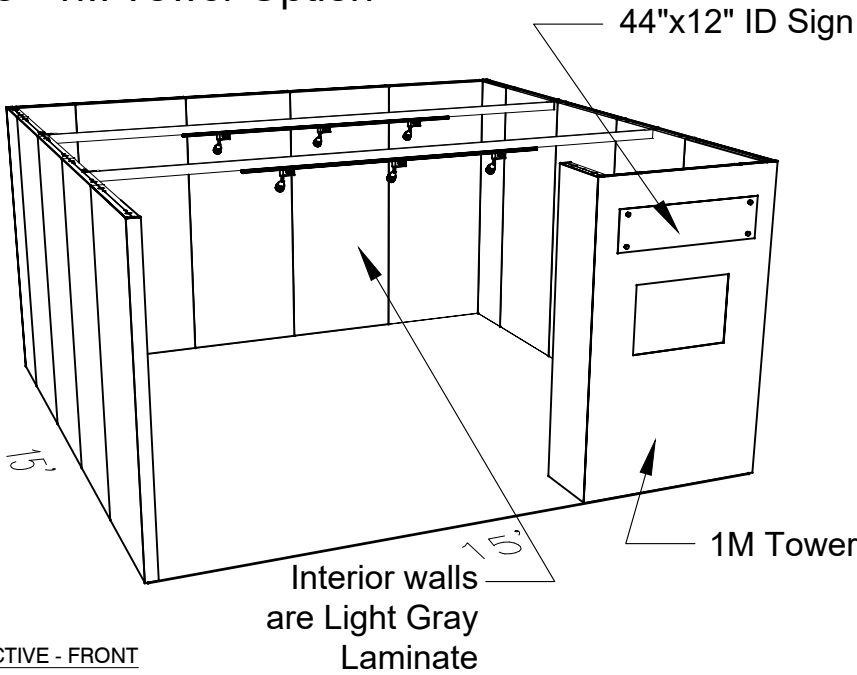
\* 0 0 5 0 5 9 0 7 0 1 - 1 0 1 1 - 1 \*



15 X 15 INLINE SALON  
1M Tower Option




15x15 - 1M Tower Option



LESS THAN 30 DAYS OUT

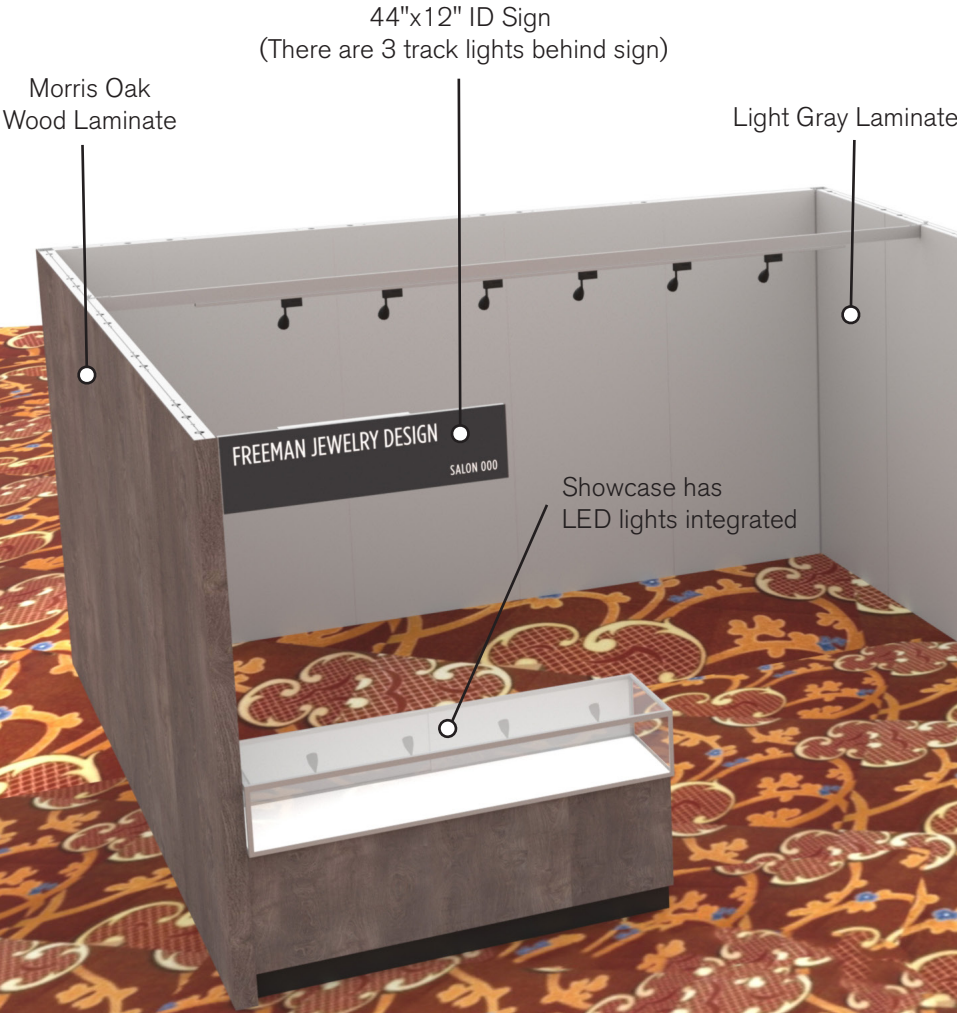
  
\* 0 0 5 0 5 9 0 7 0 1 - 1 0 1 1 - 0 \*

MORE THAN 30 DAYS OUT

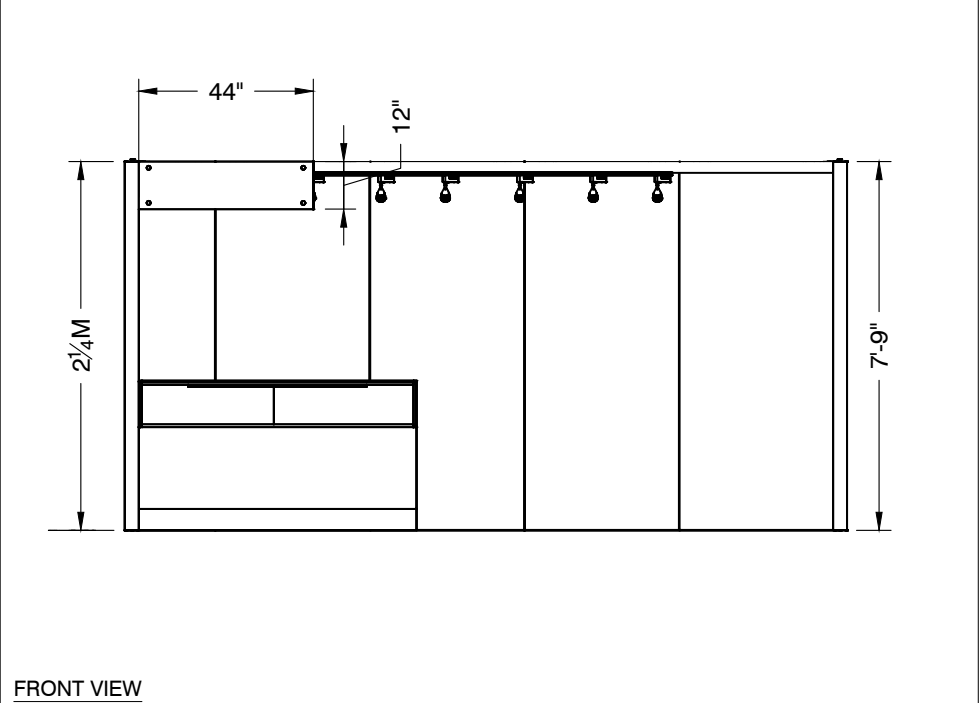
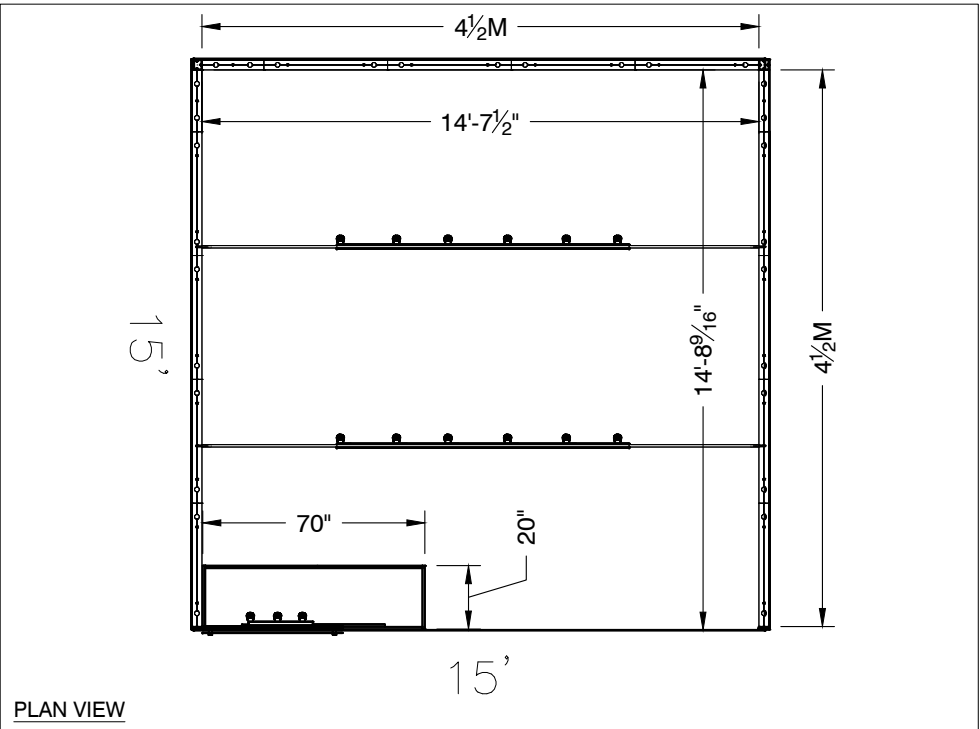
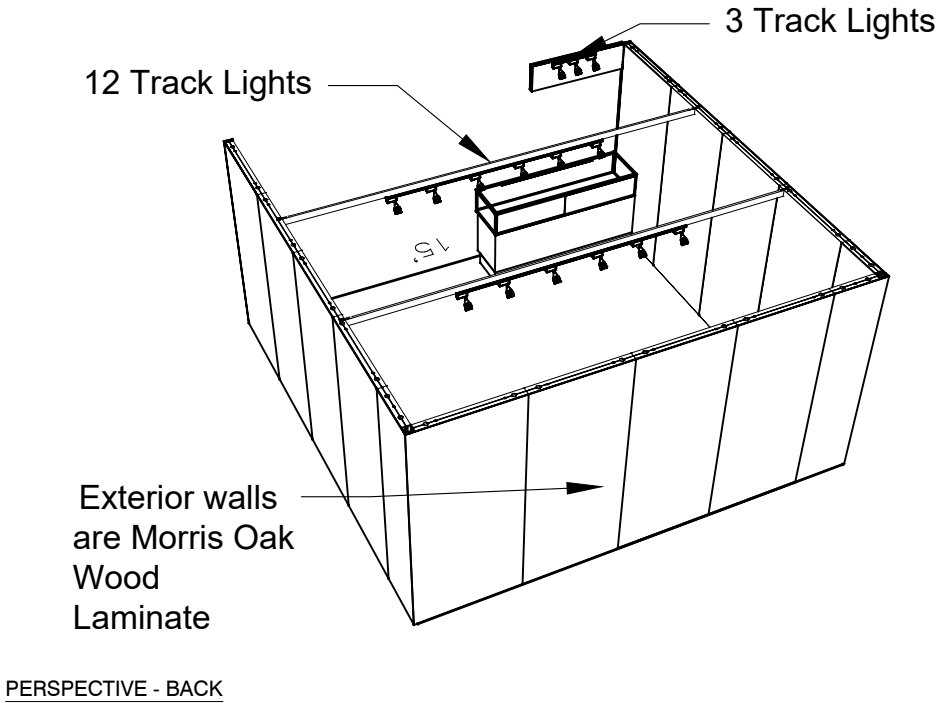
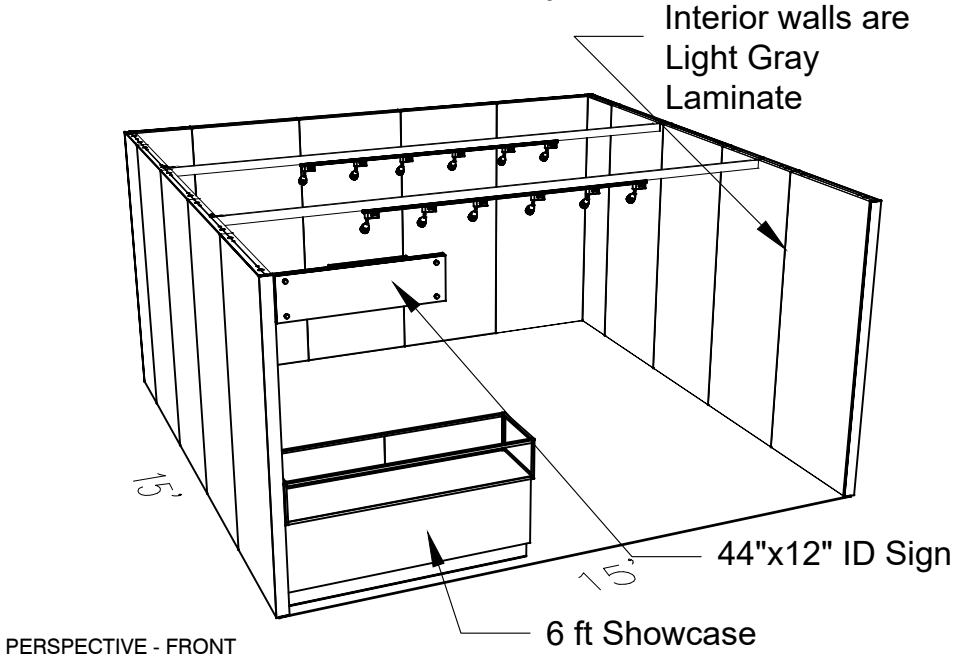
  
\* 0 0 5 0 5 9 0 7 0 1 - 1 0 1 1 - 1 \*



15 X 15 INLINE SALON  
2M Low Showcase Option



15x15 - 2M Low Showcase Option



LESS THAN 30 DAYS OUT

\* 0 0 5 0 5 9 0 7 0 1 - 1 0 1 1 - 0 \*

MORE THAN 30 DAYS OUT

\* 0 0 5 0 5 9 0 7 0 1 - 1 0 1 1 - 1 \*